

**SOUTHWARK  
COLLEGE**

Southwark.ac.uk  
020 3757 4000

**SOUTHWARK  
COLLEGE**



# **FURTHER EDUCATION**

**COURSE GUIDE 2019**



## MESSAGE FROM OUR PRINCIPAL



**I am thrilled to welcome you to Southwark College where students are at the forefront of everything we do.**

**We are proud to be one of the top performing colleges in London coupled with a £42m state of the art campus.**

**Choosing where to study and which course is a very important decision. Hopefully this Prospectus will guide you.**

**This is a fantastic place to learn new skills, that will equip you for future employment or higher education.**

**I look forward to meeting you at the College very soon.**

**Annette Cast  
Principal**



## MONTHLY OPEN EVENTS

**IF YOU WOULD LIKE** more information, please come to one of our Open Events and have a chat with our Advice and Guidance team.

Our open events are a great way to get a feel for college life and see our amazing facilities. You will have the opportunity to speak to staff and meet current students. Visit our website and register for fast track entry today:

**[Southwark.ac.uk/events](https://www.southwark.ac.uk/events)**

[Southwark.ac.uk](https://www.southwark.ac.uk) @SouthwarkColl



# Contents

Message from our Principal	2
Open events	2
Why choose us?	4
Information for parents and carers	6
Where our courses get you	7
Our campus	8
General entry requirements	9
How to apply	10
Course level guide	11
Support for your studies	12
Apprenticeships	14
A Levels	16
Access	16
Art and Design	17
Business, Finance and Law	18
Dance	19
Drama	20
Early Years	21
English and Maths	22
ESOL (English for Speakers of Other Languages)	22
Fashion	23
GCSEs	23
Health and Social Care	24
IT/Digital	25
Media	26
Music	27
Science	28
Supported Learning	28
Teacher Training	29
Travel and Tourism	30
Courses at Lewisham College	31
Fees and funding information	32
Financial support schemes	32
Bursaries	33
Higher Education at Southwark College	34
Disclaimer	35



# Why choose us?

## GET SET FOR SUCCESS AT SOUTHWARK COLLEGE - A TOP FIVE LONDON INSTITUTION

Southwark College is a thriving, dynamic further education college. Our aim is to enable students to gain the qualifications, professional skills and confidence they need to achieve their career ambitions.

The College is one of the best in the capital, ranked 3rd in London in the latest Department of Education tables\*. We are part of NCG - one of the largest further education providers in the UK - and have recently been rebranded as Southwark College, having previously been part of Lewisham Southwark College. This is an exciting change which allows us to tailor our curriculum to meet the needs of the communities we serve, bringing even more opportunities for our students. At our well-equipped, recently rebuilt campus, we offer vocational courses in a wide range of fascinating subjects -

from business to travel and tourism. We believe our role is to prepare you for an exciting career in your chosen sector, and our courses are designed with this in mind. You'll be taught by tutors with industry experience, benefit from visits and lectures from external businesses, and get hands-on experience by going on work placements.

You can also choose to 'earn while you learn' on our highly successful apprenticeship programme.

The College has excellent success rates, with 100 per cent of students achieving their qualification in many subject areas. Whether you want to find your first role in an industry you're passionate about, or progress on to further study, Southwark College is the place to start.





## WHAT WE OFFER:

- Friendly, supportive community where your voice matters
- Impressive sites and a new facility in Southwark opposite Southwark tube station
- State-of-the-art facilities that reflect what you'll find in the industry
- Courses at a variety of levels, enabling you to start studying the subject you love right away and then progress on to the next level
- Strong business partnerships, ensuring you gain the skills employers are looking for
- Access to advanced resources and innovative teaching as part of the UK's largest provider of further education
- Excellent Student Support service to iron out any problems, helping you get the most out of your College experience

\*Rankings relate to 2018 for Lewisham Southwark College.



# Information for parents and carers

**AS A PARENT OR CARER** you may have some questions and concerns about how your child should apply to the College, the courses we offer, and helping your child make a smooth transition from school to College.

We are always happy to help. We encourage you to come along to one of our open days to get an idea of life at College, or contact us at [info@Southwark.ac.uk](mailto:info@Southwark.ac.uk) to discuss any particular queries.

You can also see some frequently asked questions which you might find helpful on our website ([southwark.ac.uk](http://southwark.ac.uk)).

College is a more adult environment than school, where students benefit from becoming more independent, taking more responsibility for their own progress and getting ready for work. However for some students – and their parents – the transition can be daunting.

We aim to work with parents to give students the support they need to succeed at College and progress on to a great job or further study.

Every 16-18 year old student is on a Study Programme which includes not only their chosen course but

also English and maths support, work experience, employability skills training, help with CV writing and preparing for a job or university interview. 16-18 year old students also have a Progress Coach who works with their lecturers and other support staff to make sure that learners have all the help and support that they need.

If you are a parent and have a question or query, please get in touch with us at

[info@Southwark.ac.uk](mailto:info@Southwark.ac.uk)  
or call: 020 3757 4000



# Where our courses get you

## STUDYING AT SOUTHWARK

**COLLEGE** opens up a huge range of different options for your future and, right from the start of your course, we'll encourage you to think about what you want to do next.

For many learners, studying will be a stepping stone to a more advanced qualification such as a Southwark College Higher Education (HE) course, or a degree course at university.

Alternatively, you may be eager to get straight to work and start applying what you've learnt in the real world. Throughout your course, you'll get the opportunity to go to careers fairs where you can talk to Higher Education providers and employers about where your course could lead.

Many of our students progress on to degree programmes at highly regarded universities and other institutions, and to interesting roles in a wide range of industries. With the right training and support, there's no reason why you shouldn't follow in their footsteps.

## ALUMNI PROFILE



### HOW VICE CHANCELLOR WAS #MADEBY SOUTHWARK COLLEGE

Nick Petford has climbed the ranks of higher education to become Vice Chancellor of the University of Northampton but - having left school at 16 with few qualifications - it was a science Access course at Southwark College that sparked his love of learning and put him on the path to success.

He now works at the very top level of HE and is known around the world for his research on topics such as the conditions which cause volcanoes.

Nick says: "Southwark College gave me a second chance. The staff invested heavily in their students, and I always felt they had my best interests at heart. The College has played a part in everything I've gone on to achieve."

# Our campus

**LOCATED ON 'THE CUT'**, our campus is opposite Southwark tube station and just a few minutes walk from Waterloo station, with numerous bus routes passing close by - making it easy to travel to College wherever you are living.

## SOUTHWARK COLLEGE

25 The Cut, London, SE1 8LF

**Buses:** 1, 4, 26, 45, 59, 63, 100, 155, 168, 171, 172, 176, 188, 381

**Tube:** Waterloo or Southwark

**Rail:** Waterloo or Waterloo East





# General entry requirements

The College's general entry requirements for each level are listed below.

**Courses may have additional requirements which you will also need to meet. See our website ([Southwark.ac.uk](http://Southwark.ac.uk)) for details.**

ENTRY LEVEL	LEVEL 1	LEVEL 2	LEVEL 3
<ul style="list-style-type: none"> <li>➤ No previous qualifications</li> <li>➤ You must have a good reference, interview and assessment</li> <li>➤ As a part of the application process your reading and writing skills will be assessed as well as your commitment and interest in the subject</li> </ul>	<ul style="list-style-type: none"> <li>➤ Entry Level qualification (including Entry Level 3 Skills in English and Maths) or GCSEs mainly at grade 2</li> <li>➤ Your commitment and interest in the subject will also be assessed at one of our 'meet the teacher' events</li> </ul>	<ul style="list-style-type: none"> <li>➤ Four GCSEs at grade 3 or above, plus a Level 1 qualification (with a suitable level of English or Maths Functional Skills)</li> <li>➤ Related Level 1 qualification</li> </ul>	<ul style="list-style-type: none"> <li>➤ Five GCSEs at grade 4 or higher, including English Language</li> <li>➤ Four GCSEs at grade 4 or higher including English Language, or relevant Level 2 qualification in a related subject</li> <li>➤ A good interview and assessment: your commitment and interest in the subject will be assessed during the application process</li> <li>➤ You must also satisfy the subject specific entry requirements</li> </ul>



# How to apply

---

**YOU MAY KNOW EXACTLY** what you want to study - or you may be in need of some inspiration. In this guide you can check out the great range of courses on offer at Southwark College, get inspired and prepare to take your exciting next step! Once you have a course in mind, please apply via our website:

[Southwark.ac.uk](http://Southwark.ac.uk). Alternatively, you can visit any of our campuses or call us on **020 3757 4000** to apply.

If you've got any other questions, contact our Admissions and Student Support Centres on **020 3757 4000**. When enrolling you'll need to bring certain bits of evidence with you (for a full list of what you need to bring, see our website). We won't be able to complete your enrolment without this evidence, and it could delay you starting your exciting next step here at the College.



# Course level guide

<p><b>Level 3 Advanced level</b></p> <p>If you already have at least 4-5 grade A*-C/9-4 GCSEs (including English and/or maths), BTEC Diploma, NVQ 2 or equivalent.</p> <p><b>2 Years</b></p>	<p><b>Qualifications</b></p> <ul style="list-style-type: none"> <li>• A-levels</li> <li>• GCSE in applied subjects</li> <li>• International Baccalaureate</li> <li>• Key Skills Level 3</li> <li>• BTEC Awards, Certificates and Diplomas at Level 3</li> <li>• NVQs at Level 2</li> </ul>	<p><b>With this level of qualification</b></p> <p>You could progress into higher education, an apprenticeship or a wide range of jobs.</p>
<p><b>Level 2 Intermediate level</b></p> <p>If you have 4 GCSEs at grades D-E/3-1 or an NVQ 1.</p> <p><b>1 Year</b></p>	<p><b>Qualifications</b></p> <ul style="list-style-type: none"> <li>• GCSE grades A*-C/9-4</li> <li>• BTEC Awards, Certificates and Diplomas at Level 2</li> <li>• Key Skills Level 2</li> <li>• Functional Skills at Level 2</li> <li>• NVQs at Level 2</li> </ul>	<p><b>With this level of qualification</b></p> <p>You could move onto a Level 3 course or into a job with training or an apprenticeship.</p>
<p><b>Level 1 Foundation level</b></p> <p>If you have basic qualifications or low grades at GCSE.</p> <p><b>1 Year</b></p>	<p><b>Qualifications</b></p> <ul style="list-style-type: none"> <li>• BTEC Introductory Diplomas and Certificates</li> <li>• Functional Skills at Level 1</li> <li>• BTEC Awards, Certificates and Diplomas at Level 1</li> <li>• Foundation Learning Tier Pathways</li> <li>• NVQs at Level 1</li> </ul>	<p><b>With this level of qualification</b></p> <p>You could move on to a Level 2 course or an apprenticeship.</p>
<p><b>Entry level</b></p> <p>If you have no qualifications or expect to need support with your future learning</p> <p><b>1-2 or 3 Years</b></p>	<p><b>Qualifications</b></p> <ul style="list-style-type: none"> <li>• Entry Level Certificates</li> <li>• Skills for Life</li> <li>• Functional Skills at Entry Level (English, maths and ICT)</li> <li>• Functional Skills at Entry Level</li> <li>• Awards, Certificates and Diplomas at Entry Level</li> <li>• Foundation Learning at Entry Level</li> </ul>	<p><b>With this level of qualification</b></p> <p>You could move onto a Level 1 course.</p>



## Support for your studies

---

**WE WANT TO ENSURE YOU HAVE THE BEST POSSIBLE EXPERIENCE** at Southwark College. Whether you've already chosen a course, or need a bit of help deciding, our dedicated team is here to help you start your learning journey with us, and make the most of your time at the College.

### **ADMISSIONS**

We want to make enrolling at Southwark College as easy as possible for you. Once you've applied, we'll consider your application and arrange for you to come to the College so you can find out more about where and what you'd like to study. During the admissions process, our staff will talk to you about your chosen programme and give you a taster in your preferred subject area. We'll then confirm the outcome in writing, and keep in contact with you as you prepare to join the College.

### **ADVICE AND GUIDANCE**

Our College has friendly and highly experienced staff on hand to offer advice about courses, careers and any issues you may need assistance with. This might include fees and finance or personal problems that could prevent you getting the most out of your experience.

### **LEARNING SUPPORT**

We are here to help if you have been assessed as having a learning difficulty or medical condition and need extra support on your course.

**We can offer:**

- 1:1 or small group in-class support
- Specialist specific Learning Difficulty support
- Screening for dyslexia support
- Coaching sessions/workshops to equip you with strategies to help with studying and learning
- Assessment and access arrangements for exams

**LEARNING CENTRE**

The Learning Centre offers you access to resources and support in a calm and friendly environment. Resources include core course text books – in print or online – and many desktop computers and mobile devices. There are also printing facilities available and a variety of study areas for different ways of working, eg whole class work, small group work or silent working. You can also access support, either individually or as part of a group, for developing the following skills to enable you to maximise your progress:

- ICT
- Digital
- Study
- Research
- Presentation
- English
- Maths

**ENGLISH AND MATHS**

Most employers agree that good English and maths skills are one of the most important things they look for when considering taking on an employee – and with competition

for jobs increasing, it's crucial you build up your confidence in these skills to succeed in any career. In fact, under government rules, if you got a grade 3 (or D) or below in English or maths at GCSE at school, and are under 18, you'll need to retake the exam to achieve at least a grade 4.

At Southwark College you'll be able to do this alongside your chosen College programme. Our teaching staff make English and maths lessons fun to help maximise your achievement in these important qualifications and improve your prospects when you finish your programme with us.

**STUDENT UNION**

We want students to be involved in all aspects of College life. You can join our Student Union to make your voice heard by giving us feedback, help organise activities, and access a range of benefits.

**STUDENT AMBASSADOR SCHEME**

At Southwark College we offer a great Student Ambassador scheme that will give you a chance to:

- Receive high street vouchers for your work
- Boost your CV and skills
- Build your self-confidence
- Make friends with other students from all over the College
- Get your chance to become our Student Ambassador of the Year

# Apprenticeships

**AN APPRENTICESHIP** combines practical training in a job with study. Being an apprentice means that you can gain the skills and qualifications you need for your chosen career while earning a wage.

At Southwark College, we match you with an employer in your chosen sector, and work together to develop an individual training programme designed to give you the skills and experience you need to succeed.

As an apprentice you will:

- work alongside experienced staff
- gain job-specific skills
- earn a wage and get holiday pay
- study towards a relevant qualification (usually one day a week)

## There are 3 different levels of apprenticeship:

- Intermediate Level Apprenticeship: working towards level 2 qualifications
- Advanced Level Apprenticeship: working towards level 3 qualifications
- Higher Level Apprenticeships: working towards level 4 and above qualifications

## WHO CAN DO AN APPRENTICESHIP?

You need to be 16+, living in England and not in full-time education to do an apprenticeship (but you can apply when you're still at school). There is no upper age limit for apprentices. Southwark College offers apprenticeships in a range of roles in four key sectors: hospitality, creative, business, and construction. We set up Advice and Guidance appointments, during which our specialist advisers will make sure that you meet the relevant eligibility criteria and help you decide on the level of apprenticeship you should apply for.



See [SOUTHWARK.AC.UK](https://www.southwark.ac.uk) for new courses

## SOUTHWARK COLLEGE CAN SUPPORT THE FOLLOWING APPRENTICESHIPS:

Apprenticeship	Level 2	Level 3	Level 4	Level 5	Level 7
Brickwork	•				
Business Administrator		•			
Carpentry and Joinery	•				
Chef de Partie		•			
Commis Chef	•				
Production Chef	•				
Community Arts	•	•			
Customer Services Practitioner	•				
HR Support		•			
Hospitality Supervisor		•			
Hospitality Team Member	•				
IT Application Specialist	•	•			
Infrastructure Technician		•			
Operations / Departmental Manager				•	
Painting and Decorating	•				
Plumbing and Heating	•				
Project Management			•		
Property Maintenance Operative	•				
Cultural Heritage Venue Operations	•	•			
Live Events and Promotions	•	•			
Senior Leadership					•
Team Leader/Supervisor		•			
Technical Theatre: Sound Light and Stage	•	•			



# A Levels

**STUDYING FOR A LEVELS** gives you the chance to learn about a subject that interests you in more depth, as well as developing your analytical and problem solving skills. Popular with employers and universities, these qualifications give you a great foundation if you want to go on to study for a degree or other Higher Education course.

Course	Level 3
Biology	•
A Level programme: Biology, Chemistry and Maths. Plus Health and Social Care	•
Maths	•
Psychology	•

## Access to Higher Education

**OUR ACCESS** courses are a great stepping stone to higher education (HE) if you don't have traditional qualifications, or have been out of education for a while. Taught in our dedicated HE centre by experienced tutors, you'll gain the academic knowledge, advanced study skills and confidence you need to progress on to the HE course of your choice.

Course	Level 3
Access to HE Diploma: Health and Social Care Professions	•
Access to HE Diploma: Radiology	•
Access to HE Diploma: Nursing	•
Access to HE Diploma: Law	•
Access to HE Diploma: Business	•
Access to HE Diploma: Music	•
Access to HE Diploma: Dance	•
Access to HE Diploma: Fashion	•
Access to HE Diploma: Science	•
Access to HE Diploma: Education and Teacher Training	•



# Art and Design

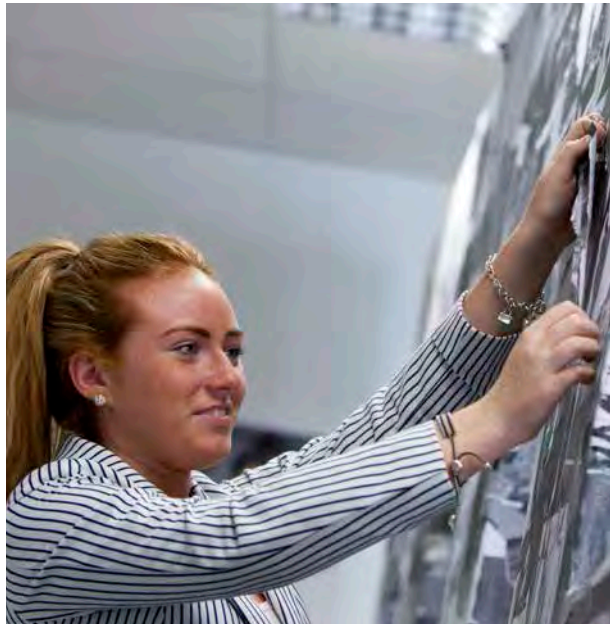
**ART IS THE ULTIMATE WAY** of expressing yourself, and making it your career means you'll get to do what you love, every day. On our art courses you'll explore and experiment with a wide variety of techniques in our well-equipped studios and build a strong portfolio of work, enabling you to go on to a range of fascinating job roles such as a graphic designer, artist or animator.

Course	Level 1	Level 2	Level 3	Full Cost
Art and Design	.	.	.	
CAD				.
Printmaking				.

## JOBS INCLUDE

- > ILLUSTRATOR
- > PRACTISING FINE ARTIST
- > ART DIRECTOR
- > CURATOR
- > COMMUNITY ARTIST
- > ART TEACHER
- > CREATIVE DIRECTOR

ONE IN SIX PEOPLE  
IN LONDON  
WORKS IN  
THE ARTS



See [SOUTHWARK.AC.UK](https://www.southwark.ac.uk)  
for new courses

# Business, Finance and Law

**HAVE YOU GOT WHAT IT TAKES** to make it in the business world?

Whether you're aiming for a career in accountancy, marketing or human resources – or want to rise up the ladder in your current career sector – our business courses will set you on the right track to succeed. Learning from tutors who've worked in multi-national companies, management and retail businesses, you'll also gain valuable work experience as part of your course.

Course	Level 1	Level 2	Level 3	Level 4
Accounting (Adult)	•	•	•	•
Business Studies	•	•	•	
Law (Adult)		•	•	

## 107,000

**FREELANCERS  
WORK IN  
LEGAL AND  
ACCOUNTING  
SECTOR**

### CAREERS IN:

- > FINANCE AND ACCOUNTING
- > ADMINISTRATION
- > EXECUTIVE ASSISTANT
- > LEGAL CAREERS



See [SOUTHWARK.AC.UK](https://www.southwark.ac.uk) for new courses

# Dance

**DO YOU LIVE TO DANCE**, whether that's ballet, contemporary, hip hop or all three? On our dance courses you'll become part of a group of students who are as dedicated to their craft as you are, and just as determined to succeed in this highly competitive sector. You'll train in our state-of-the-art dance studios and perform both at the College's theatre and externally, preparing for life as a performer, choreographer or dance teacher.

Course	Level 2	Level 3
Dance	•	•

## JOBS INCLUDE

- > DANCER
- > CHOREOGRAPHER
- > DANCE JOURNALIST
- > DANCE THERAPIST
- > DANCE TEACHER

## 286,000

UK JOBS IN THE  
PERFORMING  
ARTS SECTOR

WE  
ARE  
HIRING



See [SOUTHWARK.AC.UK](https://www.southwark.ac.uk) for new courses

# Drama

**IF THE STAGE** is where you truly come alive, studying on one of our drama courses will help you turn your passion into a career. You'll learn from tutors with industry experience and benefit from our strong links with well-known local theatres like the Young Vic. With many of our drama students progressing to Higher Education and others gaining places at elite drama schools, you could follow in the footsteps of our graduates who are now making their names on TV and in the West End.

Course	Level 1	Level 2	Level 3
Drama	.	.	.

See [SOUTHWARK.AC.UK](https://www.southwark.ac.uk) for new courses



## JOBS INCLUDE

- > ACTOR
- > THEATRE DIRECTOR
- > SCRIPT WRITER
- > ARTS MANAGER
- > DRAMA TEACHER

## £32,800

AVERAGE  
SALARY  
EARNED  
BY ACTORS,  
ENTERTAINERS  
AND  
PRESENTERS



# Early Years

**NO TWO DAYS ARE EVER THE SAME** when you work with children, and it's down to you to keep them safe, happy, occupied and eager to learn. If you'd love to work in an Early Years setting – or already work in this sector and want to move to a more senior role – our Early Years courses will arm you with the skills, up-to-date knowledge and experience you need to succeed.

Course	Entry	Level 1	Level 2	Level 3
Childcare	•	•	•	•
Children and Young People			•	

See [SOUTHWARK.AC.UK](https://www.southwark.ac.uk) for new courses



## 70%

OF SENIOR MANAGERS IN OFSTED GRADE 1 NURSERIES ARE QUALIFIED TO AT LEAST LEVEL 4

## 405,600

PEOPLE WORK IN NURSERY SETTINGS IN ENGLAND

### JOB'S INCLUDE

- > NURSERY ASSISTANT
- > CHILDMINDER
- > EARLY YEARS EDUCATOR
- > FAMILY SUPPORT WORKER

## 3,092,100

CHILDCARE PLACES IN ENGLAND



Phone: 020 3757 4000

A B C D E F G  
H I J K L M N  
O P Q R S T U  
V W X Y Z



# English and Maths

**NO MATTER WHERE YOU SEE YOURSELF** in the future, you need to have good English and maths skills to find a job and move up the career ladder. If you left school without the qualifications you need, our courses will help you gain these vital skills – and even have fun while doing so.

Adult English and maths courses are **FREE** to most adults as long as you do not already hold the qualification you are studying for and have lived in the country for at least 3 years.

Course	Entry	Level 1	Level 2	Level 3
English	•	•	•	
Maths	•	•	•	
A Level Maths				•

For GCSE's in English and Maths, refer to our [GCSE section](#)

## ESOL for Adults and Young People

**IF ENGLISH ISN'T YOUR FIRST LANGUAGE** and you want to improve your speaking, listening, reading and writing skills, our ESOL courses will give you the boost you need. On our courses you'll not only improve your English language knowledge but also learn about life and work in the UK and gain employability skills. We offer ESOL courses at all levels and for a range of careers (such as English for Classroom Assistant) and progression routes (including university), which means you can study on exactly the right course for you.

### ESOL will enable you to:

- Improve your speaking, listening, reading and writing skills
- Participate in college life, and take part in activities and trips
- Improve your employability skills including CV writing and interview techniques
- Learn about life and work in the UK
- Prepare for future courses or employment

You will need to come along for an assessment to make sure we refer you to the right class for your level of English. Please visit [Southwark.ac.uk](https://www.southwark.ac.uk)

See [SOUTHWARK.AC.UK](https://www.southwark.ac.uk) for new courses

# Fashion

**IMAGINE SEEING YOUR DESIGNS WORN ON THE CATWALK** – or even in the high street. If you live and breathe fashion and want to show the world your creative ideas, studying on one of our courses will help you succeed in this exciting, fast-paced industry. At Southwark College you'll work in our well-equipped workshops, get the chance to take part in prestigious industry competitions, and benefit from our close links with leading designers and fashion companies.

Course	Level 2	Level 3	Full Cost	Access
Fashion	•	•		•
Fashion Illustration			•	
Dressmaking			•	

## JOBS INCLUDE

- > FASHION DESIGNER
- > TREND FORECASTER
- > STYLIST
- > FASHION ILLUSTRATOR
- > PATTERN CUTTER
- > TAILOR



See [SOUTHWARK.AC.UK](http://SOUTHWARK.AC.UK) for new courses

# GCSEs

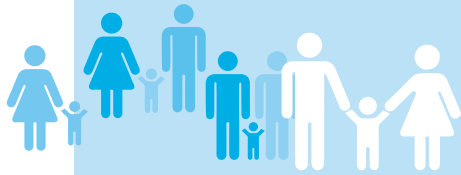
**GOOD GCSE PASSES IN KEY SUBJECTS** are a basic requirement in just about any career sector. At Southwark College, our GCSE courses are taught by experienced tutors in an innovative and supportive learning environment, ensuring that you leave with the vital qualifications employers are looking for.

Course	Level 2
GCSE English	•
GCSE Maths	•
GCSE Science	•
GCSE programme: Biology, Chemistry, Physics	•

# Health and Social Care

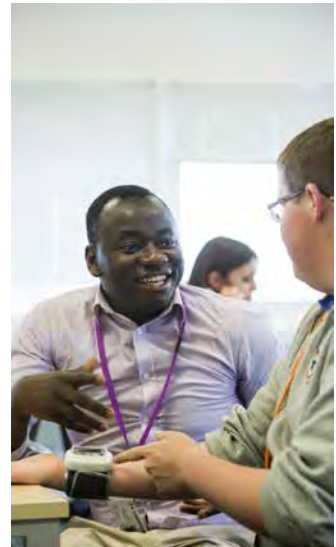
**THERE ARE FEW CAREERS WHERE YOU GET TO MAKE A REAL DIFFERENCE** to people's lives, but health and social care is one of them. If you're drawn to helping people – especially those who are vulnerable or socially excluded – taking one of our government-recognised courses will open the door to a very rewarding career, or help you to progress in your current workplace.

Course	Level 2
Health and Social Care	•
Adult Care	•



## JOBS INCLUDE

- > CARER
- > YOUTH WORKER
- > SOCIAL WORKER
- > COUNSELLOR
- > MIDWIFE
- > NURSE
- > PARAMEDIC



See **SOUTHWARK.AC.UK**  
for new courses



# IT and Digital

**THINK OF AN INDUSTRY...** and now imagine it without IT and computing. Digital skills are the backbone of our modern world and people with these skills are urgently needed by businesses across the capital. By studying on one of our IT/digital courses you can not only find a fascinating job, you can also become part of the future.

Course	Entry	Level 1	Level 2	Level 3
IT Users	•	•	•	•
ICT Systems Support			•	•
BTEC in IT		•	•	•
Web Design*		•	•	
Social Media and Networking Skills for Beginners*	•			
Visual Basic Programming*				•
Coding and Programming*				•

\* Full cost



See [SOUTHWARK.AC.UK](http://SOUTHWARK.AC.UK) for new courses

## 22%

OF COMPANIES BELIEVE A LACK OF DIGITAL SKILLS IS PREVENTING THEM FROM OPTIMISING THEIR ONLINE PRESENCE

## £33,000

AVERAGE SALARY EARNED BY AN IT USER SUPPORT TECHNICIAN WITH 3-5 YEARS' EXPERIENCE

## JOBS INCLUDE

- > WEB DESIGN
- > SYSTEMS SUPPORT
- > IT TECHNICIAN
- > SOFTWARE/GAMES DEVELOPMENT



Phone: 020 3757 4000

# Media

**FILMMAKER, ANIMATOR, GRAPHIC DESIGNER...** working in the media sector means using your creative skills to entertain, educate and inform. On our media courses you'll discover the latest techniques, learn how to use state-of-the-art equipment, and build that all-important showreel or portfolio - bringing you a step closer to your dream job in the creative industries.

Course	Level 2	Level 3	Full Cost
Digital and Creative Media	.	.	
Games Development	.	.	.



**CONSUMERS SPENT MORE ON DIGITAL MEDIA THAN TRADITIONAL MEDIA FOR THE FIRST TIME IN 2017**



**£41,000  
AVERAGE  
SALARY  
EARNED BY A  
FILMMAKER  
WITH 3-5  
YEARS'  
EXPERIENCE**

## **JOBS INCLUDE**

- > SCRIPTWRITER
- > GRAPHIC DESIGNER
- > PRODUCER
- > DIRECTOR
- > EDITOR
- > RESEARCHER
- > CAMERA OPERATOR
- > VISUAL FX
- > ADVERTISING EDITOR



See [SOUTHWARK.AC.UK](http://SOUTHWARK.AC.UK) for new courses

# Music



**WORKING IN THE MUSIC BUSINESS IS EXHILARATING**, highly creative and great fun – but it can also be a tough gig. You'll need expertise and industry experience as well as talent if you're going to succeed. Our music courses enable you to develop your practical skills and professional knowledge, giving you the best chance of doing what you love for a living.

Course	Level 2	Level 3	Full Cost	Access
DJ and Radio			•	
Logic Pro X				•
Music	•	•		•
Music Technology	•	•		•

**JOBS INCLUDE:** > STUDIO ENGINEER > MUSIC PRODUCER  
> LIVE SOUND ENGINEER > SOUND DESIGNER > SONG WRITER  
> MUSICIAN > A & R (ARTIST AND REPERTOIRE)



See **SOUTHWARK.AC.UK**  
for new courses



# Science

**IN THE UK THERE'S A SEVERE SHORTAGE OF PEOPLE** with Science, Technology, Engineering and Maths (STEM) skills, which are vital for the growth of sectors like healthcare, mobile communications and engineering. On our science courses you'll learn the fundamentals of your chosen specialism and put theory into practice in our high-tech labs, preparing you for one of the many fascinating jobs these sectors have to offer.

Course	Level 1	Level 2	Level 3
Applied Science	•		•
GCSE Science		•	
GCSE Programme: Biology, Chemistry, Physics		•	
A Level Biology (intensive)			•
A Level Psychology			•
Psychology (BTEC)			•
A Level programme: Biology, Chemistry and Maths. Plus Health and Social Care			•

## Supported Learning



**WE WANT EVERY STUDENT TO GET THE SUPPORT THEY NEED TO MOVE INTO WORK** so we offer Pathways to Employment and Internships for young people with support needs with Education Health Care plans in our Supported Learning Department at the College. These programmes are for young people with support needs who are interested in and committed to getting a paid job. They are five days a week and involve either a day with a college tutor or ongoing support from a college tutor at work. Job coaches also support trainees at work.

### Our courses include:

- Supported Pathways into the Creative Industries (our employers include the National Theatre and the Royal Opera House)
- Supported Internship Hospitality (our current employers include Just Hospitality, the Café of Good Hope and the Hillside Café)

For more information or to apply please contact [supportedlearningadmin@Southwark.ac.uk](mailto:supportedlearningadmin@Southwark.ac.uk)

# Teacher Training



**IF YOU LOVE THE IDEA** of inspiring the next generation to learn, a job in teaching could be for you. Studying for one of our well-respected teaching qualifications will enable you to gain a variety of skills – from assessment techniques to inclusive teaching approaches – opening the door to a job in this most rewarding of professions.

All HE courses and FE part time courses for Teaching are for 19+ only, we will consider 18 year olds if you have the relevant GCSE's

Course	Level 2	Level 3	Full Cost
Award in Education and Training Programme (Full Cost)		•	•
Award in Support Work in Schools and Colleges Programme	•		
Certificate in Supporting Teaching and Learning Programme	•		
Certificate in Supporting Teaching and Learning Programme		•	



See [SOUTHWARK.AC.UK](http://SOUTHWARK.AC.UK)  
for new courses

# Travel and Tourism

**WORKING IN TRAVEL AND TOURISM** means meeting new people, experiencing new places and dealing with new situations every day – broadening your horizons like no other job. If helping customers have the holiday of their dreams sounds like the role for you, our travel and tourism courses will give you the specialist skills you need to start your journey.

Course	Level 1	Level 2	Level 3
Air Cabin Crew		•	
Aviation Operations/Industry	•	•	•
Hotel pathway (adults)		•	
Reservation Systems (adults)		•	
Tourism Diploma	•	•	•

**JOBS INCLUDE:** > TOUR MANAGERS > HOLIDAY REPRESENTATIVES  
> TRAVEL AGENCY MANAGERS > AIRLINE CABIN CREW  
> AVIATION: WORKING IN THE AIRPORT AND LAND BASED STAFF



See [SOUTHWARK.AC.UK](https://www.southwark.ac.uk) for new courses

# Courses at Lewisham College

**OUR SISTER COLLEGE** has two campuses - on Lewisham Way and in Deptford - and offers a huge range of vocational programmes:

## **CATERING AND HOSPITALITY:**

Culinary Skills, Professional Cookery, Patisserie and Bakery, Barista and more

## **CONSTRUCTION :**

Bricklaying, Carpentry, Electrical, Painting and Decorating, Plumbing and Multiskills

## **HEALTH AND SOCIAL CARE:**

Health and Social Care, Counselling and Adult Social Care

## **HAIR AND BEAUTY:**

Hair, Beauty, Barbering, Fashion and Media Make-Up

## **PUBLIC SERVICES, RETAIL AND SPORT:**

A wide range of courses including Sports Academy programmes in Football, Boxing, Basketball, Futsal and Rugby

**For Lewisham College courses and open day dates:**  
(see [Lewisham.ac.uk](http://Lewisham.ac.uk))



# Fees and funding information

**WE APPRECIATE** that the costs of coming to College can quickly mount up. It's important to us that attending College is affordable, and that you have access to any financial support for which you're eligible.

If you're 16-18 and a British citizen, you will not have to pay to study, but may need help with other essential costs such as travel, books, equipment and childcare. There are a range of financial support options available which you may be eligible for, depending on your circumstances.

## FINANCIAL SUPPORT SCHEMES

### 16+ Oyster card

If you're 16-18, studying on a Further Education programme and living in a London borough, you're eligible for free travel on TFL bus routes. (Students not living in a London borough are eligible for half price travel on TFL bus routes.) Find out more at [tfl.gov.uk/fares-and-payments/oyster/what-is-oyster](https://tfl.gov.uk/fares-and-payments/oyster/what-is-oyster).

### Free college meals

You will be eligible for free meals if you, or your parent or carer, are in receipt of benefits such as, Income Support, Jobseekers Allowance or Universal Credit. Find out more at [gov.uk/apply-free-school-meals](https://gov.uk/apply-free-school-meals).

### Totum card

The Totum card (previously known as the NUS Extra card) gives students access to over 200 exclusive discounts with a range of beauty, entertainment, eating out, music and travel brands. You can sign up for a Totum card, which costs £12, at the NUS website ([nus.org.uk/en/nusextra/](https://nus.org.uk/en/nusextra/)).

### Care to Learn scheme

If you are a parent aged under 20, you may be eligible for the Care to Learn scheme which provides up to £175 per week to help with childcare costs while you study. You can only claim this benefit if your child's other parent is not available to provide childcare. Find out more at [gov.uk/care-to-learn/overview](https://gov.uk/care-to-learn/overview).



# Bursaries

## National 16-18 bursary

The 16-18 bursary is designed to provide help with books, equipment, travel etc for students experiencing financial hardship. You may be eligible for this bursary, which is worth up to £1,200, if your household income is £21,000 or below. You'll also need to maintain a minimum 90 per cent attendance to be paid this bursary. Find out more at: [gov.uk/1619-bursary-fund](http://gov.uk/1619-bursary-fund).

## Council bursaries -

Some London boroughs offer student bursaries to young people in education and training. These include the Southwark Educational Maintenance Supplements (SEMS) which provide financial support for 16-18 year olds living in Southwark borough who are eligible for free school meals but do not receive the vulnerable student bursary under the national 16-18 bursary scheme. You can find out about council bursaries by getting in touch with your local borough council.



# Continue your studies at Southwark College

**WE PROVIDE A RANGE OF HIGHER EDUCATION (HE) COURSES**, and also have partnerships with a number of leading universities, enabling you to 'top up' your HE qualification to a full Honours degree.

There are lots of advantages of studying for an HE course with us, including:

- Lower tuition fees than universities
- Much higher ratio of tutor to student teaching, with smaller class sizes
- Dedicated HE learning hub within the College's campus, which hosts fantastic new facilities
- Central London location close to leading businesses, enabling you to gain valuable work experience as part of your course
- Option to gain a shorter HE qualification and enter employment, or continue to a 'top-up' third year, gaining a full degree
- Strong links with Higher Education providers including University of East London, University of Greenwich and Canterbury Christ Church University



### Courses at Southwark College:

- HNC in Performing Arts (Dance)
- Foundation Degree in Art and Design
- Foundation Degree in Music and Production
- Foundation Degree in Business Management
- Foundation Degree in Business Information Technology
- HNC in Business
- HND in Business
- MBA (Masters of Business Administration)
- MA (Master of Arts) in Business Management
- FdSc Cyber Security
- FdSc Network and Security Technologies
- Foundation Degree in Children and Young People
- Foundation Degree in Early Years
- Foundation Degree in Health and Social Care
- HNC Construction
- HND Construction

- Foundation Degree in Tourism and Hospitality Management

### Teaching courses at Southwark College:

- Diploma in Education and Training
- Professional Graduate Certificate in Education and Training
- Diploma in Teaching Mathematics
- Diploma in Teaching English
- BA (Hons) Degree in Education and Professional Development (Top-Up)
- CELTA

## DISCLAIMER

Whilst every effort has been made to ensure that information in the College Guide is accurate and correct, we reserve the right to make changes to our courses and the services we offer. Latest information will be found on the website. Southwark College is committed to promoting and providing equal opportunities for all its staff and students.

Phone: 020 3757 4000



---

## CONTACT US:

### **SOUTHWARK COLLEGE**

25 The Cut, London, SE1 8LF

**Buses:** 1, 4, 26, 45, 59, 63, 100, 155, 168,  
171, 172, 176, 188, 381

**Tube:** Waterloo or Southwark

**Rail:** Waterloo or Waterloo East

Southwark.ac.uk  
info@Southwark.ac.uk  
020 3757 4000

**SOUTHWARK  
COLLEGE**