

# SOUTHWARK COLLEGE



# GET READY FOR YOUR FUTURE

Course Guide

[southwark.ac.uk](https://southwark.ac.uk)





# WELCOME

## SOUTHWARK COLLEGE

“

---

### Welcome to Southwark College.

Southwark College is a fantastic place to learn new skills that will equip you for your next steps. We are proud to be one of the top performing colleges in London with learning delivered both in a modern campus and online.

Our students' wellbeing is paramount. We work hard to ensure the College offers a safe environment to all and there are a range of services to support our students to progress to further study or employment.

Choosing where to study and which course to take is a very important decision and this prospectus will guide you in making the right choice for you.

We know that sometimes students change their minds or want more help around careers, apprenticeships and university. We can offer you a session with one of our qualified careers advisors to help you with this. To arrange a session, or if you need any further information, please contact us on **020 3757 4000**, [info@southwark.ac.uk](mailto:info@southwark.ac.uk) or via live chat on our website at [www.southwark.ac.uk](http://www.southwark.ac.uk).

We look forward to meeting you at the College very soon.



# GET READY FOR YOUR FUTURE

“

---

**SOUTHWARK COLLEGE** is a friendly and supportive community, with an inspiring range of work-focused courses in a learning environment where talent is nurtured.

Our campus is a thriving, dynamic further education college in the heart of London, SE1 so explore our courses in this guide or attend an open event to find out more about what we offer.

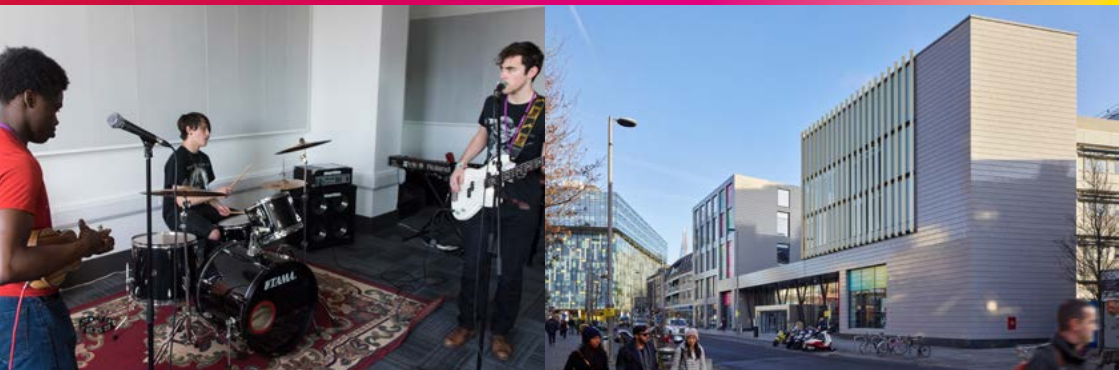
---







# YOUR COLLEGE IN THE HEART OF LONDON



**As well as studying in a modern campus with aircraft fuselage classroom, technical theatre studio, fashion workshops, dance studios or science labs, we also provide innovative online learning resources to ensure learning can be delivered remotely when required.**

Our courses are designed in partnership with leading London employers and every student has the NCG guarantee and the opportunity to benefit from:

- » Attending masterclasses, guest speaker sessions and industry visits
- » Taking part in national competitions, Duke of Edinburgh scheme, work experience and volunteering placements
- » Student support, 121 and Group Tutorial and careers advice
- » An active enrichment, Student Union and student enterprise programme
- » Employability Hub with access to job vacancies with local employers and help to improve your CV and job applications
- » On-site café and discounts in the many catering facilities in the area
- » Learning Support and Resource Centre with e-learning materials and study support.





# STUDY IN SE1

Located in the heart of London on The Cut in SE1, our campus is opposite Southwark tube station and just a stone's throw away from Waterloo and London Bridge stations. There are several bus, rail and tube routes close by, making it easy to travel to us from across Greater London and the surrounding counties.

**Southwark College**

25 The Cut  
London  
SE1 8LF

**Buses:** 1, 4, 26, 45, 59, 63, 100, 155, 168, 171, 172, 176, 188, 381

**Tube:** Waterloo or Southwark

**Rail:** Waterloo or Waterloo East







## INFORMATION, ADVICE AND GUIDANCE

**Choosing your next step is an exciting time but we know you may have questions about what happens next.**

We are here to support you on your journey and keep you informed throughout the process so that you have everything you need before enrolment begins.

Look out for our regular emails, which will remind you of key dates and update you on the latest news from the College.

If you have any questions in the meantime, you contact our student advisors on **020 3757 4000** or by email to **[info@southwark.ac.uk](mailto:info@southwark.ac.uk)**.



### **Our friendly digital representatives**

will also be available to help you through the application and enrolment process.

You can speak to them via our **web messenger** service **[southwark.ac.uk/chat](https://southwark.ac.uk/chat)** or on a Live Q&A on our **socials**.

# OPEN EVENTS

**To find out more about the College, meet the teachers and speak with our Advice and Guidance team, come to one of our Open Day events.**

Our Open Days take place either on campus or online and are a great way to get a feel for College life and see our facilities.

**At both on campus and virtual Open Days you can:**

- » Hear from our students and teachers
- » Find out more about our courses
- » Receive information about the support we offer
- » Find out more about student life

During Covid-19 we moved some of our events online.

To watch our recordings or take a virtual tour through our campuses visit **[southwark.ac.uk/opendays](https://southwark.ac.uk/opendays)**

To register for an event, visit **[southwark.ac.uk/opendays](https://southwark.ac.uk/opendays)**



# SOUTHWARK LIVE

**We have recently launched Southwark Live, an initiative which connects our students with businesses and organisations through some amazing experiences and opportunities.**

Held virtually and on campus, you can choose to get involved in careers Q&As, live classes and speaker sessions from employers such as Barclays, Hilton Hotels and Resorts and Guy's & St Thomas' NHS Foundation Trust.



Find out more at **[southwark.ac.uk/live](https://www.southwark.ac.uk/live)**







# SUPPORT AT EVERY STEP

---

**Coming to college can be daunting and you probably have lots of things on your mind. How much will it cost? Will I be able to keep up? What happens if I need extra support?**

**Our Student Support Services can help you to stay on track and supported throughout your studies.**



**[southwark.ac.uk/studentsupport](https://southwark.ac.uk/studentsupport)**

## GETTING STARTED

**If you are not sure what to study, we can help you decide on the best course for you and advise you on possible career paths.**

To arrange a session with one of our qualified careers advisors, please visit the team in student services, on campus or contact us on:

**020 3757 4000, [info@southwark.ac.uk](mailto:info@southwark.ac.uk)**  
or via the live chat service on our website at **[southwark.ac.uk](https://southwark.ac.uk)**.

## SUPPORTING YOUR STUDIES

**Our team are here to support and encourage you providing advice and guidance for your future.**

In our innovative Learning Centre, you will find lots of learning resources, computers and mobile devices, and different study areas.

It is the place where you can develop crucial skills such as ICT, research and presentation skills and access a variety of online resources to enable remote teaching when necessary.

If you require additional learning support to help improve your English and maths skills your teachers will be able to support you or you can be referred to our Additional Learning

Support team if you require exam access arrangements or more specialist support. If you don't already have GCSEs in English and Maths at the level you need you can also study these alongside your chosen course.

Read more about our English and maths courses on page 54.

If you have a specific learning difficulty, dyslexia or a medical condition, the Additional Learning Support team can also provide support on a one-to-one basis or in small groups to help you get the most out of your course.



## SUPPORTING YOUR CAREER

**Southwark College has industry links with many employers across London and can support you to find great work experience and volunteering opportunities as well as part-time work to enhance your CV and UCAS applications.**

We encourage students to get involved in all aspects of College life. We have an active Student Union and will be asking for nominations for the Student Union Executive, including a new President and Vice President.

Each class will elect Course Representatives and they will be invited to discuss any concerns with College management staff on a regular basis. The Student Union will also work with you to help you organise student-run events and access a range of student benefits, including student discount.



# SUPPORTING YOUR WELLBEING

## We have a dedicated team to help with welfare and safeguarding concerns and emergency situations.

You can access counselling support as well as one-off support and advice. If you have a diagnosed mental health concern we will do all we can to support you.

You can contact the Safeguarding Team by emailing [\*\*safeguarding@southwark.ac.uk\*\*](mailto:safeguarding@southwark.ac.uk).

We can also support you if you are a looked after child, care leaver, being supported by the Youth Offending Service, a young parent

or a young carer.

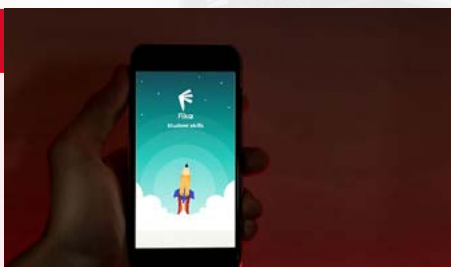
If you have an Education, Health and Care Plan (EHCP) we have a dedicated team of staff who will work with you and your family to discuss the support you may need to be successful in your studies. If you have any learning difficulties or disabilities or require exam access arrangements the team will discuss ways the College can support you. Read more about our Supported Learning courses on page 80.

### Fika Mental Fitness

**Southwark College has partnered with Fika mental fitness to bring the Fika: Student Skills app to help students and staff stay motivated, productive, focused and connected during this unusual time.**

The app is designed to help combat the challenges of blended study and the mental health impact during the Covid-19 pandemic. It offers a series of programmes created to help students learn from expert psychologists, other students, academic and professional athletes.

Students can use the app to access five-minute video, audio and text programmes covering many topics, including managing



distractions and uncertainty, maintaining motivation and positivity, staying connected, self-care and healthy habits.

Students can also take part in Fika's daily community mental fitness workout, share experiences, learn from other members of the community and cheer each other on. For more information and to download the app, visit [\*\*southwark.ac.uk/fika\\_\*\*](https://southwark.ac.uk/fika_)



**Southwark College is proud to be part of NCG, one of the country's leading college groups.**

We are one of seven colleges across the country that make up NCG, meaning we're a key part of providing education and training to learners, apprentices and employers across the UK.

Together, we share expertise, support each other to grow, help each other to innovate and accomplish real change for individuals, communities and economies across the country.

### **Student benefits**

Students studying at any of our colleges benefit from the NCG Guarantee. This guarantee gives all our students access to a range of tools and initiatives centred around a core set of principles. Our courses, additional support services and enrichment activities will equip you with a wider set of skills, all of which aim to make you more employable.

**Put simply, the NCG Guarantee gives students access to additional activities, resources and initiatives to help you achieve your ambitions and career goals.**

**The NCG Guarantee is centred around a core set of principles:**

- » Employability
- » Community
- » Enterprise
- » Mental Fitness
- » Digital

Throughout your time with us you will be involved in a range of projects and initiatives focused on these principles. Coupled with excellent teaching and learning, you will complete your course with a unique set of skills which help set you up for your future.



SOUTHWARK  
COLLEGE





## SUPPORT FOR CARE LEAVERS

**Southwark College is a partner of the Care Leaver Covenant, which helps to support care experienced students with their progression and next steps after college.**

Southwark College is aware and understands the challenges that care experienced students face and although we may never know what happened in the young person's life prior to college we want to create a sense of community. We provide wellbeing support and activities and workshops throughout the year focused on progression and exam support.

We also offer an enhanced bursary of up to £200 per half term and support around key holidays in the year through our care experienced teams' channel where students can opt in to being part of the group.

To find out more visit  
**[southwark.ac.uk/careleavers](https://southwark.ac.uk/careleavers).**



# SUPPORT FOR YOUNG PEOPLE NOT IN EDUCATION, EMPLOYMENT OR TRAINING

## Back on Track Programme

If you are not sure what to do next, get back into education with the Southwark College Back on Track Programme.

### You will benefit from group and 1-2-1 support, as well as:

- » A detailed initial assessment, skills assessment and SMART Action Plan
- » A programme tailored to your study goals and training and development needs
- » Employability support, including preparation for job interviews, CVs and applications
- » Access to prearranged job interviews and job fairs
- » Ongoing support for sustainable employment or education

As part of the programme you will also have the opportunity to receive an introduction to apprenticeships with our employer partners or access further study in a range of vocational courses, including ICT, Computing and Digital, Business and Enterprise, Creative and Performing Arts, Music, Media, TV and Film and English/ESOL.



To find out more visit  
**[southwark.ac.uk/track](https://southwark.ac.uk/track)**



# YOUR NEXT STEP

You can find out more information about all of our courses in this Guide, on our website or by attending an open event. This includes:

- » Course information and career pathways for each area of learning
- » Opportunities for work experience, volunteering, enrichment and competitions linked to the subject you are interested in
- » Student support and additional qualifications available to enhance your CV and university applications

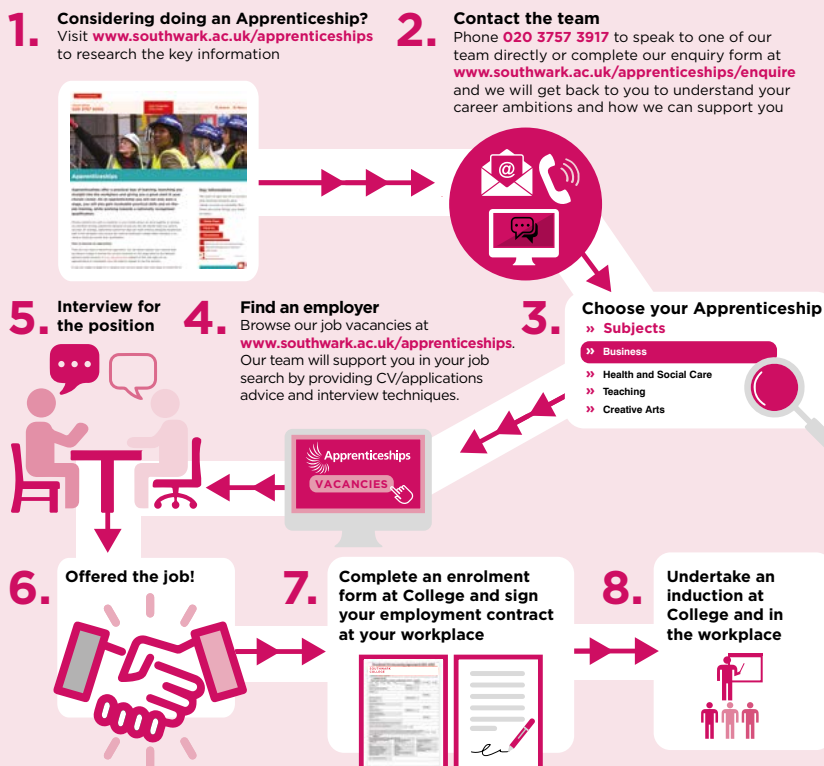
## HOW TO APPLY



# Explore our courses at **southwark.ac.uk**



## HOW TO BECOME AN APPRENTICE







## FEES, FINANCIAL SUPPORT AND BURSARIES

---

**Studying at Southwark College is an investment in your future. It is important to us that attending college is affordable and that you have access to any financial support for which you are eligible.**

The fees you will pay will be determined by the course you enrol on and your own personal circumstances. Generally speaking, if you are aged 16-18 and a British citizen, you will not have to pay course fees but you may need help with other essential costs such as books, travel, equipment and childcare.

The College also offers many courses for adults that are either free or partially funded.



**southwark.ac.uk/finance**

## **Our Student Services team can help you to apply for additional bursaries or funding, including:**

- » **16+ Oyster card**  
This scheme offers free travel on TFL bus routes if you are 16-18 years old and live in a London borough, or half-price if you don't live in a London borough.
- » **Free college meals**  
You could be eligible for free meals at College if you are under 18 and your parent or carer receives benefits such as Universal Credit.
- » **Care to Learn scheme**  
Successful applicants of this scheme receive up to £175 a week towards childcare costs while you study if you are under 20 and a parent.
- » **Totum Card**  
The National Union of Students (NUS) Totum Card costs £12 per year (in 2021) and gives you access to discounts for eating out, shopping, music, travel and more.
- » **National 16-19 bursary**  
Successful applicants of this bursary receive funds for course related expenditure if you have a household income of £28000 or below (in 2021).
- » **Vulnerable Young Person bursary**  
If you are a young person in care, care leaver, young person, receiving income support, you could apply for funds to support your studies.
- » **Council bursaries**  
Some London boroughs offer student bursaries to their young residents who are in education and training.

Visit the Student Services team on campus or email **bursaries@southwark.ac.uk** for further advice and guidance on applying for a bursary or accessing financial support. Information correct at the time of going to print, please visit **southwark.ac.uk/finance** for the latest information.



# COURSES FOR 16-18s

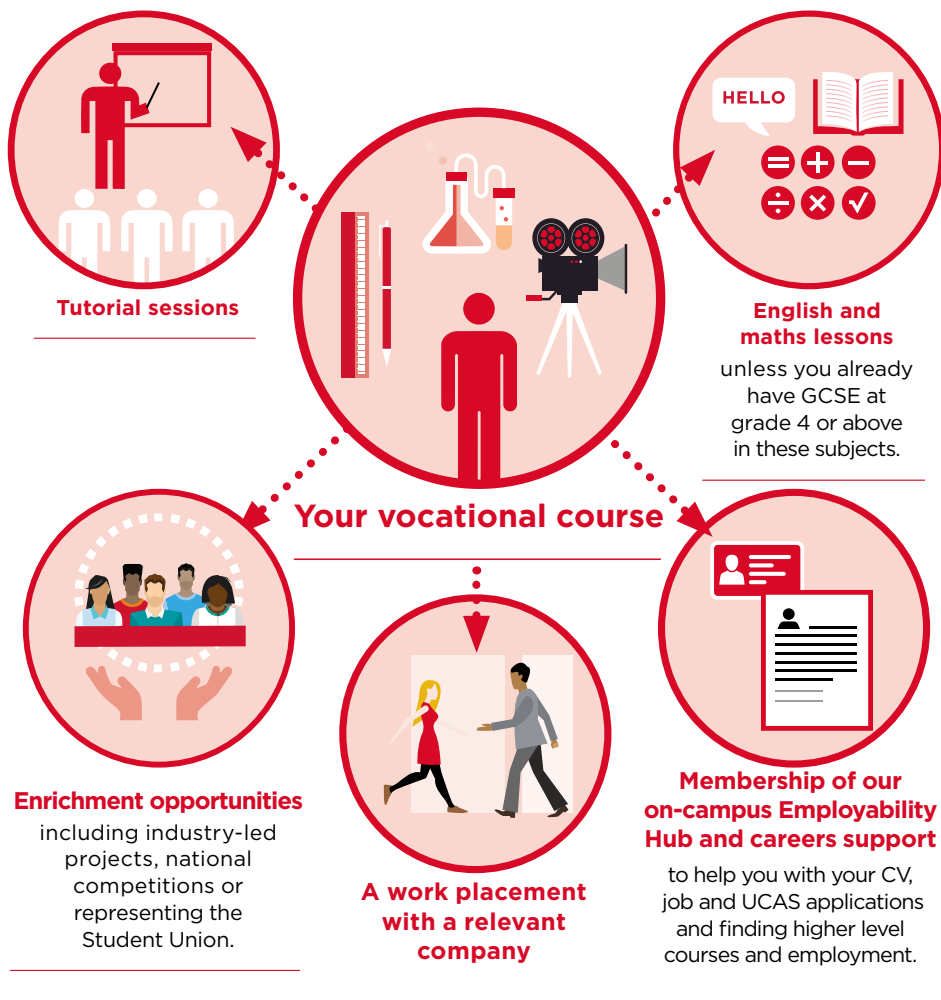
---

**Studying with us means far more than just achieving your vocational qualification. As a 16-18-year-old student, you will be on a study programme which is designed to give you the skills you need to progress to further study or a job in your chosen career.**

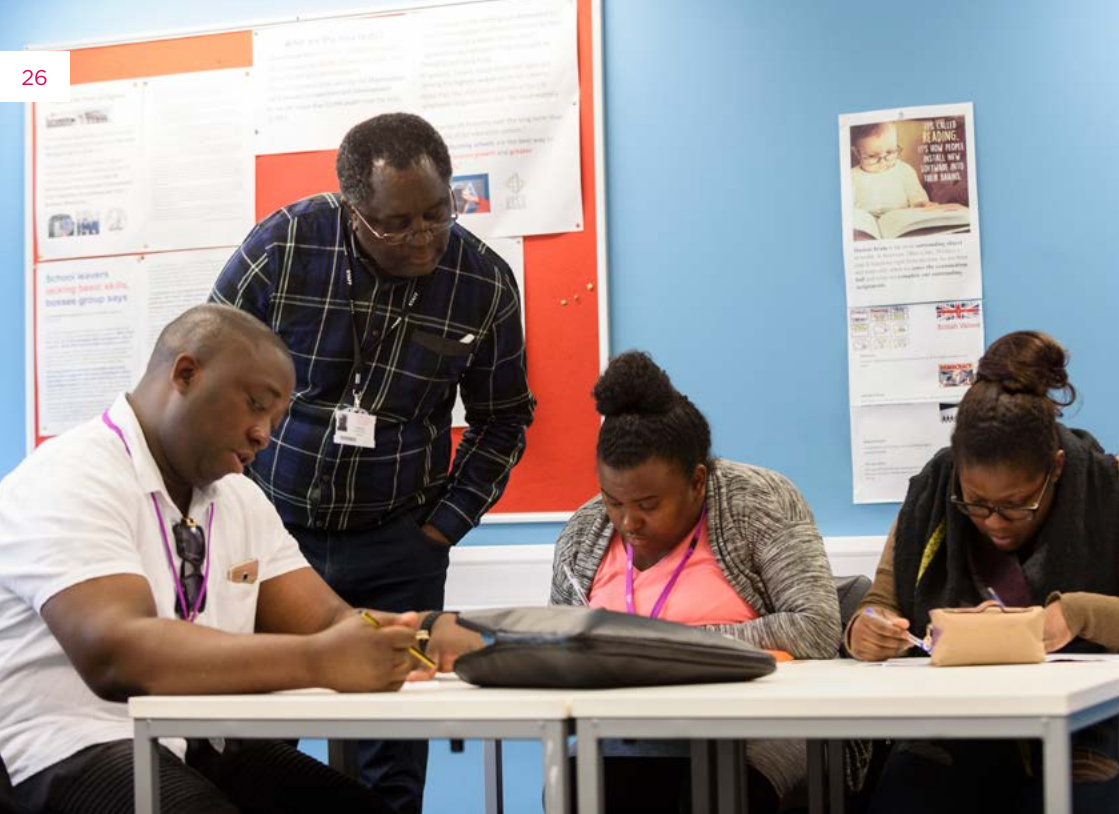


**southwark.ac.uk/16-18**

## A STUDY PROGRAMME CONSISTS OF:







# COURSES FOR ADULTS

---

**Whether you are returning to study, looking to retrain or want to improve your career, as an adult student, you will join our professional pathway, which is designed to support you with your career goals.**



[southwark.ac.uk/adults](https://southwark.ac.uk/adults)

## ALL ADULT LEARNERS HAVE THE OPPORTUNITY TO ACCESS:

### JOB SEEKERS

**The Employability Hub** offering free and impartial careers advice and to help you with your CV, job and UCAS applications and finding higher level courses and employment.



**Remote learning materials** and study resources.



**Student support services**, including the learning resource centre and advice and guidance on applying for bursaries or financial support.



# CHOOSING THE RIGHT COURSE FOR YOU

Choosing your next step can be challenging, with many subjects and qualifications offered at different levels. The level you study will depend on your previous qualifications, skills and experience. Use our Levels Chart to help you find the right course for you.

| Level                         | Choice of qualifications  | Entry requirements  | With this qualification you could progress on to...                   |
|-------------------------------|---|---|---|
| <b>Entry Level 3</b>          | Awards, Certificates/ Diplomas, Functional Skills, Foundation Learning, Skills for Life | There are no entry requirements but if you don't have any qualifications you will be asked to take an English and maths test                                  | Level 1 course  |
| <b>Level 1 (Foundation)</b>   | BTECs, NVQs, Functional Skills, Foundation Learning Tier Pathways                       | There are no entry requirements but if you don't have any qualifications you will be asked to take an English and maths test                                  | Level 2 course or apprenticeship                                      |
| <b>Level 2 (Intermediate)</b> | GCSE grades 9-4, BTECs, NVQs, Functional Skills   | Four GCSEs at grades 9 – 3/A* – D (English and maths desirable) or a Level 1 qualification  | Level 3 course, apprenticeship or job with training                   |
| <b>Level 3 (Advanced)</b>     | GCSEs in applied subjects, International Baccalaureate, BTECs, NVQs                     | Four GCSEs at grade 9-4/A* – C, including English and Maths, or a Level 2 qualification in a related subject and Level 2 Functional Skills English and Maths. | Higher Education, higher level apprenticeship or a wide range of jobs |

For the latest entry criteria for each course please visit **[southwark.ac.uk](https://southwark.ac.uk)**.

# COURSES

Southwark College offers a range of courses, including vocational, academic and professional qualifications, apprenticeships, short courses, ESOL programmes and T Levels.

## YOU COULD STUDY:

| COURSE AREA                  | PAGE NUMBER |
|------------------------------|-------------|
| T Levels                     | 30          |
| Access to Higher Education   | 32          |
| Apprenticeships              | 36          |
| Art and Design               | 38          |
| Business, Accounting and Law | 40          |
| Dance                        | 44          |
| Drama                        | 48          |
| Employability Hub            | 52          |
| School of English            | 54          |
| Fashion                      | 58          |
| GCSE Programme               | 62          |
| Health and Social Care       | 64          |
| IT, Computing and Digital    | 68          |
| Lifetime Skills              | 70          |
| Media                        | 72          |
| Music                        | 74          |
| Science                      | 76          |
| Supported Learning           | 80          |
| Teaching and Education       | 82          |
| Travel and Tourism           | 84          |



# T-LEVELS

THE NEXT LEVEL QUALIFICATION

## THE NEXT LEVEL QUALIFICATION

**Get ready for your future on a T Level course. T Levels are a new vocational qualification for 16-19s, designed to give you all the skills you need for your future.**

**They are a two-year qualification designed in collaboration with employers to bring classroom lessons and work experience together.**

On a T Level, you will spend 80% of your time in the classroom and 20% on a work placement to make sure you develop the skills and experience that employers are looking for. Your employer industry placement will be for a minimum of 45 days throughout your course giving you the opportunity to put your new skills into practice whilst you study and so you thrive in the workplace.

Whatever your next step is, a T Level will help you to step into your chosen career, an apprenticeship, or a degree.



[southwark.ac.uk/tlevels](https://southwark.ac.uk/tlevels)

## Southwark College T Level Courses

### Health

#### **Supporting Healthcare - Supporting the Care of Children and Young People**

Are you caring compassionate and want to work with children and young people in a hospital or healthcare setting? A career in Health could be for you.

As a T-Level student studying on the Care of Children and Young People specialism you will build your knowledge in areas such as the principles of person-centred care; supporting the health and wellbeing of children and young people; the health, safety and environmental regulations for working in healthcare settings; the principles of good scientific and clinical practice; the study of human anatomy, physiology and diseases and disorders; core science concepts in the structure of cells, tissues and large molecules, genetics, microbiology and immunology.

Learning in our high-quality facilities with our experienced teachers, you will complete the course with the scientific knowledge and practical experience, which will enable you to work to become a healthcare assistant or a nurse.

### Digital

#### **Digital Production Design and Development**

Do you have a passion for computers and are you interested in a career in software production and design? The T-Level in Digital Production Design and Development could be for you and help to lead you to a career as a Web Designer, Web Developer, Software Developer or Computer Games Developer.

Learning from teachers with a background in industry, in modern facilities, you will learn how digital technologies impact business; the ethical and moral implications of digital technology; using data in software design; using digital technologies to analyse and solve problems; digital environments, including physical, virtual and could environments; emerging technical trends such as the Internet of Things (IoT) and Artificial Intelligence (AI); Internet security; how to test software, hardware and data; digital tools for project management and collaboration.



# ACCESS TO HIGHER EDUCATION

---

**Our Access to HE Diplomas offer a route to university for adult learners who might not have the qualifications needed for direct entry to higher education.**

Adult learners who choose an Access to HE course are often looking to retrain for a new career, upskill in their current profession or return to education as a mature student.

Taught by experienced tutors, you will gain the academic knowledge, advanced study skills and confidence you need to progress to university or higher education institution.

Our Access to HE courses require you to have a combination of GCSEs in Maths, English and Science, at grade 4 or above depending on the Diploma you take. However, if you do not already have these then equivalent qualifications, skills and experience may be accepted.

Southwark College also offers courses in Maths, English and Science to help you progress.

If you are not quite ready to start an Access course, you could also apply for a Pre-Access Certificate Level 2 Programme.



## ADVANCED LEARNER LOAN

The Advanced Learner Loan is a government loan that was introduced to make studying more affordable for adults.

If you are studying a Level 3 course, such as Access to HE, at an approved educational provider, are over 19 years old and a UK resident, you can apply for the loan, which covers all or part of your tuition fees.

If you successfully complete your Access to HE Diploma and go on to complete an eligible course in higher education or a university then you may also not have to repay the Advanced Learner Loan.

Find out more at [southwark.ac.uk/finance](https://southwark.ac.uk/finance).





## ACCESS TO HE COURSES





[southwark.ac.uk/access](https://southwark.ac.uk/access)

## Access to HE Courses

Our Access to Higher Education Diplomas are your alternative route to university. Covering a range of subject areas, our courses will equip you with skills in report and essay writing, research and referencing, communicating persuasively and using information technology.

### **Pre-Access Certificate**

Available at Level › 2

### **Access to HE: Radiography**

Available at Level › 3

### **Access to HE: Nursing and Midwifery**

Available at Level › 3

### **Access to HE: Law**

Available at Level › 3

### **Access to HE: Business Management and Accounting**

Available at Level › 3

### **Access to HE: Science**

Available at Level › 3

### **Access to HE: Education and Psychology**

Available at Level › 3

### **Access to HE: Health and Social Care**

Available at Level › 3

### **Access to HE: Computer Science and Maths**

Available at Level › 3

### **Access to HE: Engineering, Science and Maths**

Available at Level › 3



# APPRENTICESHIPS

**An apprenticeship combines practical training in a job with study. Being an apprentice means that you can gain the skills and qualifications you need for your chosen career while earning a wage.**

Southwark College has a successful history of delivering apprenticeships with a team who will work with you and your employer to develop an individual training programme designed to give you the skills and experience you need to succeed.

## As an apprentice you will:

- » Work alongside experienced staff
- » Gain job-specific skills
- » Access excellent progression opportunities for study or work
- » Earn a wage and receive holiday pay
- » Study towards a relevant qualification, which is usually one day per week in college.

## Southwark College has delivered apprenticeships in a range of roles.

Apprenticeships are available for anyone who is over 16 years old, living in England and not already in full-time education. You can apply if you are still at school and there is no upper age limit for apprenticeships.

Once you have registered you will be invited in to the college to meet with our specialist advisers who will make sure that you meet the relevant eligibility criteria and help you decide on the level of apprenticeship you should apply for.

### Apprenticeships are offered in three different levels:

- » Intermediate, working towards level 2 qualifications
- » Advanced, working towards level 3 qualifications
- » Higher, working towards level 4 and above qualifications.



To apply for an apprenticeship, register with Southwark College directly to be matched to future roles or apply for a vacancy on our website at:

**[southwark.ac.uk/apprenticeships](https://southwark.ac.uk/apprenticeships)**





# ART AND DESIGN

---

**Art and Design is the ultimate way of expressing yourself creatively and making it your career means you will get to do what you love, every day.**

On our Art and Design courses you will explore and experiment with a wide variety of techniques in our well-equipped studios and build a strong portfolio of work, enabling you to learn the skills needed for higher level study or careers in disciplines such as graphic design, animation or art and design.



[southwark.ac.uk/art](https://southwark.ac.uk/art)



## Art and Design Courses

Our creative courses will give you the opportunity to explore the materials, methods and processes that support Art and Design activities through a range of technical skills. Through a mixture of lessons, workshops, and projects, you will learn how to do research methodology, expression of thought, justification of concept and more. These expressive courses can support you into further study or employment in the creative industries.

### **Diploma in Art, Design and Media**

Available at Level > 1

### **Diploma in Art and Design**

Available at Level > 2

### **UAL Applied General Diploma in Art and Design**

Available at Level > 3

### **UAL Extended Diploma in Fine Art and Design Making**

Available at Level > 3



# BUSINESS, ACCOUNTING AND LAW

---

**In the fast-paced world of business, there are many opportunities to achieve if you can demonstrate top skills.**

Maybe you are aiming for a career in Accountancy, Marketing or Human Resources or perhaps you want to work in an entrepreneurial organisation. Whatever sector you enter our business courses could set you on the right track to achieve.

# BUSINESS

**1.2m PEOPLE**  
in the **UK** work  
in financial and  
insurance  
services

Do you have an eye for opportunity and innovation?  
Be inspired by our teachers and employer partners whose experience in international organisations will help you to gain insight through work experience and projects based on real-work environments.

## Business Courses

On our business courses you will undertake group projects, presentations and written research tasks, equipping you with the skills to progress to higher learning or career opportunities within accounting, administration, customer service, finance, information technology or sales.

At a higher level you will also gain a comprehensive understanding of theories and practices within strategy, marketing, operations and consumer psychology.

### Introduction to Business and Finance

Available at Level › 1

### Certificate in Business

Available at Level › 2

### Preparation for Access to Business

Available at Levels › 2

### Certificate in Business and Finance

Available at Level › 1

### BTEC Extended Diploma in Business

Available at Level › 3

### BTEC Foundation Diploma in Business

Available at Level › 3

### Access to HE: Business Management and Accounting

Available at Level › 3

### Visionnaires Programme

Start your own Business



# BUSINESS, ACCOUNTING AND LAW COURSES



107,000  
**FREELANCERS**  
work in the legal  
and accounting  
sector





[southwark.ac.uk/business-acc-law](https://southwark.ac.uk/business-acc-law)

## ACCOUNTING

Whether you are just starting out or already working in accountancy, our range of courses can equip you with the skills, experience and knowledge to develop your career in this lucrative industry. On our accounting courses you will learn essential skills such as bookkeeping, calculating tax, accounts preparation and sales and purchase ledgers. Completing these courses can lead you to further study or into the world of work.

### Accounting Courses

#### **AAT Accounting Software**

Available at Level › 1

#### **AAT Accounting**

Available at Level › 3

#### **AAT Bookkeeping**

Available at Levels › 1, 2

## LAW

If you are persuasive, creative and critical you can take your first steps towards a legal career through our Law programme.

### Law Course

#### **Access to HE: Law**

Available at Level › 3

#### **Preparation for Access to Law**

Available at Level › 2



# DANCE

---

**On our dance courses you will become part of a group of students who are as dedicated to their craft as you are and just as determined to succeed.**

You will train in the heart of London, at our modern dance studios on The Cut near Waterloo with opportunities to perform at the College's theatre and surrounding commercial venues.



## Shanara Edwards



**SHANARA EDWARDS JOINED** Southwark College to study Dance before going to Performing Arts school in Spain.



Shanara said: I always knew I wanted to perform but going to Southwark College introduced me to a variety of new dance styles and improved my skills so that I was ready to take up my place at the Institute of the Arts in Barcelona to study Musical Theatre.”

Since graduating Shanara has been working at Disneyland, where she spends her days rehearsing and her afternoons and evenings performing in the iconic Disneyland parades.





## DANCE COURSES





[southwark.ac.uk/dance](https://southwark.ac.uk/dance)



## Dance Courses

Training in our well-equipped dance studios, these courses are delivered through technique classes, creative sessions, rehearsals, tutorials, dance theory lessons and live performances. They cover the core techniques within Classical Ballet, Contemporary, Jazz, choreography, improvisation and contextual studies, whilst preparing you for applications, auditions and interviews for dance schools and universities.

### **Extended Diploma in Performing Arts**

Available at Level › 3

### **Diploma in Dance and Drama**

Available at Level › 2

### **Diploma in Performing and Production Arts: Dance Pathway**

Available at Level › 3



# DRAMA

---

**If the stage is where you truly come alive, studying on one of our drama courses will help you turn your passion into a career. You will learn from tutors with industry experience and benefit from our strong links with well-known local theatres such as the Young Vic.**

Many of our drama students progress to Higher Education and others secure places at elite drama schools, meaning you could follow in the footsteps of many of our graduates who are now starring on TV and in the West End.



## Southwark College Presents Animal Farm

**Performing Arts students at Southwark College showed off their talent during their performance of the George Orwell classic, *Animal Farm* to audiences at their Theatre on The Cut in London.**

The famous story of a group of animals who take control of the farm on which they live, is an allegory for the events of the Russian revolution in 1917.

Twelve Drama students starred in the production, taking on iconic roles such as Old Major, the tragic hero Boxer, and the manipulative pigs Napoleon, Snowball and Squealer. It was an ensemble production with narrator, multi-casting, a high level of physicality and stylistic set and costumes.



Tutor Michael Palmer, who directed and designed the production, said: “The students really rose to the challenge of this demanding production and created a wonderful piece of theatre that talked to an audience of all ages on many different levels. This was a great example of the amazing talent we have and demonstrated their hard work and determination to perform at the highest level.”



# DRAMA COURSES







[southwark.ac.uk/drama](https://southwark.ac.uk/drama)



## Drama Courses

Our Drama courses are designed to provide you with the skills, knowledge and understanding you need to progress to degree level study and employment in the performing arts sector. You will develop a diverse set of skills by taking part in our practical dramatic arts training and presentations, whilst building your own portfolio, undertaking written research projects and collaborating in group projects.

### **Diploma in Performing and Production Arts: Drama Pathway**

Available at Level › 3

### **Diploma in Performing and Production Arts**

Available at Level › 3

### **Diploma in Dance and Drama**

Available at Level › 2

# SOUTHWARK COLLEGE EMPLOYABILITY HUB COURSES

**The new Employability Hub is based at our campus on The Cut in London and is hosted in partnership with top employers and organisations across London.**

At the Hub, which is located at the entrance of the campus building, you can get expert advice on careers, and guidance on writing a great CV, job applications and interview techniques. You can also apply for courses and explore live job vacancies, including part-time job roles, with our employer partners.

Working with the dedicated Hub team, you will gain the additional skills and qualifications needed in the workplace and develop the knowledge needed to further your professional career.



**JOB SEEKERS**

**Head to the Hub if you are a student and would like support with:**

- » Finding employment
- » Using job boards
- » Boosting your CV
- » Writing job applications
- » Learning effective interview techniques.

Find out more  
**[southwark.ac.uk/hub](https://southwark.ac.uk/hub)**



**As well as supporting 16-18-year olds during their study programme, the Hub also offers services for adults who are currently unemployed and looking for work, including free employability courses that could help you to develop your skills and gain new qualifications.**

## Employability courses

- » Civil Service Sector-based Work Academy Training Programme
- » Introduction to Accounting
- » IT for Beginners
- » Intermediate IT
- » Introduction to the Games, Animation and VFX Industries
- » Employability Skills Training
- » ESOL
- » Introduction to Creative Media
- » Introduction to Business Administration and Office Skills
- » Pre-Entry ESOL
- » Teaching Assistant Programme
- » Guy's & St Thomas' NHS Foundation Trust Work Academy

All courses are subject to availability, eligibility and accessibility needs. You will not be guaranteed a place on a course until you have fully enrolled and received your Learning Agreement.



# SCHOOL OF ENGLISH



**The School of English works with learners to improve their reading, listening, writing and speaking in English.**

No matter where you see yourself in the future, you are likely to need to have good English and maths

skills to find a job and move up the career ladder. If English isn't your first language or if you left school without the qualifications you need, our courses will help you to improve and gain these vital skills.



## ENGLISH AND MATHS

English skills are essential for any role. Southwark College offers these courses from **basic skills up to GCSE** so you can gain these skills no matter what your current qualifications are.

### English and Maths Courses

#### **GCSE English**

Available at Level › 2

#### **GCSE Maths**

Available at Level › 2

#### **Functional Skills English**

Available at Level › 1

#### **Functional Skills Maths**

Available at Level › 1

#### **Functional Skills Maths**

Available at Entry Level › 3



# ESOL: ENGLISH FOR SPEAKERS OF OTHER LANGUAGES

Learning another language can be challenging, which is why we offer ESOL courses at multiple levels with encouraging and experienced staff to support you. Whether you want to improve your speaking, listening, reading or writing skills, or all of the above, these courses are designed to achieve all of this and more.

You will also learn about British culture and citizenship, and gain vital skills for a variety of purposes, including employment or further study. We offer ESOL courses at all levels and for a range of specialist careers, which means you can study on exactly the right course for you.

## ESOL Courses

### **ESOL 16-18s Study Programme**

Available at Pre-Entry, Entry Levels: 1,2, 3 and Level 1

### **ESOL Adult**

Available at Pre-Entry, Entry Levels: 1,2, 3 and Level 1

### **ESOL Adult for Health and Social Care**

Available at Level › 1

### **ESOL Adult for Working in Schools**

Available at Level › 1

### **ESOL Adult for Business and Finance**

Available at Level › 1

### **ESOL Adult for Business and Administration**

Available at Entry Level › 3



[southwark.ac.uk/schoolofenglish](https://southwark.ac.uk/schoolofenglish)

# IELTS™

The world's leading international test, recognised by employers, universities and governments. Southwark College is an IELTS Test Centre and has courses to prepare you for your test, opening doors to your chosen career.



## IELTS Courses

**IELTS Preparation and Practice Programme**

**IELTS Summer Programme**



# FASHION

---

**If you have a passion for fashion and want to show the world your creative designs, studying on one of our courses will help you succeed in this exhilarating, dynamic industry.**

You will learn in our well-equipped workshops, get the chance to take part in prestigious industry and work with employers in London to hone your craft.



## Creative Arts End of Year Show Goes Live

**The Creative Arts End of Year Show is one of the College's most eagerly awaited annual events. Fashion, art, design, media, music, dance and drama students exhibited their work through a combination of recorded performances, installations, projects, images and short films.**

With new health and safety measures in during the COVID-19 pandemic, students created a virtual showcase, which was produced before and during the lockdown. The show was streamed virtually and attended by invited guests, Creative Arts students as well as their family, friends and teachers, who watched a variety of pieces in the live showreel.

Jon Fell, Head of Faculty at Southwark College, said: "Exhibiting our students' work at our end-of-year show has been a highlight for all Creative Arts students at Southwark College. Showcasing their work online was an exciting project and an experience that is more important than ever. Although it was not possible to stage a show on campus, it was a great platform to engage with future employers and a celebration of the hard work and dedication of our talented students during these difficult times."



# FASHION COURSES







[southwark.ac.uk/fashion](https://southwark.ac.uk/fashion)



## Fashion Courses

Our fashion courses will introduce you to a range of creative skills in fashion, business and retail. Our courses cover key skills within dressmaking, understanding materials, designing, pattern cutting and more. Completing these courses can set you up for further learning, or for your first step into this exciting, fast-paced industry.

### **Extended Diploma in Fashion and Textile Design**

Available at Level › 3

### **Diploma in Art and Design: Fashion Design Pathway**

Available at Level › 2

### **UAL Applied General Diploma in Art and Design: Fashion Pathway**

Available at Level › 3



# GCSE PROGRAMME

---

**Good GCSE results in key subjects are often a requirement for many careers. Southwark College offers a GCSE pathway, including English and maths, for both 16-18 year olds and adults.**

Taught by experienced tutors in a supportive learning environment, you will have the opportunity to gain these important qualifications and prepare for higher level study and employment.



[southwark.ac.uk/gcses](https://southwark.ac.uk/gcses)



## GCSE Courses

GCSE  
PROGRAMME

On these courses you will gain numeracy, literacy or science skills along with support to progress to further study.

### English

Available at Level › 2

### Maths

Available at Level › 2

### GCSE Programme: Biology, Chemistry and Physics

Available at Level › 2

### GCSE Media

Available at Level › 2

### GCSE Business

Available at Level › 2



# HEALTH AND SOCIAL CARE

---

**There are few careers where you can make as big a difference to people's lives as you can in health and social care. If you enjoy helping people, studying one of our courses will help you to progress in the workplace.**

Working in partnership with employers such as Guy's and St Thomas' NHS Foundation Trust, Southwark College combines real-work experience with innovative course programmes to help you prepare for a career in this rewarding sector.



## Southwark College student lends support at care home

**There are more people applying to study medicine and related courses in the health and social care sector, with record numbers accepting a place to study nursing in England at a 11% increase on the same time last year.**

Southwark College's Access to Nursing and Midwifery and Health and Social Care programmes are some of the most popular qualifications, providing students with the skills and qualifications to progress to higher level study and have a successful career in this highly sought-after sector.

During the COVID-19 pandemic, many students have worked in key health frontline positions, including Stephanie Ogundolie who is currently studying Access to Nursing at Southwark College

whilst supporting some of the most vulnerable members of society as a healthcare assistant at Bupa Meadbank.

She said: "Working at the care home during the coronavirus pandemic has been challenging but also a privilege. I'm pleased to support the residents with the knowledge and skills I gained in my course, it is an experience I will always remember and take forward into the future."

Stephanie is doing remarkable work looking after her community whilst also caring for her children. She has received support and encouragement from her teachers, who helped Stephanie to keep up with her studies online during lockdown in preparation for when she joins her nursing degree at university next year.



# HEALTH AND SOCIAL CARE COURSES





[southwark.ac.uk/health](https://southwark.ac.uk/health)

## Health and Social Care Courses

Our Health and Social Care give you real experience in the health industry, caring for those in need in a variety of settings. On our courses you will gain a thorough understanding of equality, diversity, inclusion, healthcare legislation and health and safety.

You will also receive training and guidance from our experienced teaching staff to help you achieve your goals and progress onto further study or work in the Care Sector.

### **Introduction to Health, Care and Science**

Available at Level › 1

### **First Extended Certificate in Health and Social Care**

Available at Level › 2

### **BTEC in Health and Social Care**

Available at Level › 3

### **BTEC Extended Diploma in Health and Social Care**

Available at Level › 3

### **Access to HE: Health and Social Care**

Available at Level › 3

### **Access to HE: Nursing and Midwifery**

Available at Level › 3

### **Supporting Healthcare - Supporting the Care of Children and Young People**

T Level Programme



# IT, COMPUTING AND DIGITAL

---

**IT, Computing and Digital is at the heart of every sector. It is the backbone of the modern world and people with these skills are essential to businesses across the globe.**

Our courses will give you the opportunity to gain the qualifications you need and prepare you for a fascinating and vitalising career in the future.



[southwark.ac.uk/digital](https://southwark.ac.uk/digital)

# IT, COMPUTING AND DIGITAL

If you have a passion for technology, a career in IT could be for you. Apply for an IT course to expand your knowledge and skills, empowering you to break into this sector.

## IT, Computing and Digital Courses

There is an ever-growing demand for tech-savvy professionals in our increasingly digital world. Our range of specialist courses cover key areas such as business information technology, social media and networking skills, website development and computer maintenance.

### **Award in IT Application Specialist**

Available at Levels › Entry 3, 1 and 2

### **Introduction to Digital Skills**

Available at Level › 1

### **Extended Certificate in Digital Industries and Technology**

Available at Level › 2

### **Diploma for IT Users**

Available at Level › 3

### **BTEC Extended Diploma in Computing**

Available at Level › 3

### **BTEC Foundation Diploma in Computing**

Available at Level › 3

### **Access to HE: Computer Science and Maths**

Available at Level › 3

### **Diploma in Web Application Development**

Available at Level › 5

### **Digital Production Design and Development**

T Level Programme



# LIFETIME SKILLS GUARANTEE:

## Free Level 3 courses for adults

The government launched this £95 million initiative to provide an estimated 11 million adults the opportunity to gain their first Level 3 qualification, in-demand skills and secure employment opportunities.

To access the Lifetime Skills Guarantee scheme, adults must be 24 and over, reside in England, and not have a Level 3 qualification in any field.

### Lifetime Skills Guarantee courses

- » **AAT Advanced Diploma in Accounting**
- » **AAT Advanced Certificate in Bookkeeping**
- » **Diploma for IT Users**
- » **Diploma in Leadership and Management**
- » **Subsidiary Diploma in Aviation Operations**
- » **UAL Diploma in Creative Media: TV, Film Production & Animation**
- » **Certificate in Supporting Teaching and Learning**

Find out more  
[southwark.ac.uk/lifetime-skills-guarantee](https://southwark.ac.uk/lifetime-skills-guarantee)



All courses are subject to availability, eligibility and accessibility needs. You will not be guaranteed a place on a course until you have fully enrolled and received your Learning Agreement.







# MEDIA

---

**If you love to use your creative skills to entertain, educate and inform, the media business could be a great career choice for you.**

Based in the heart of London, our well-equipped TV, Film and Media suites are the perfect environment to get hands-on experience with the latest techniques and equipment and build your showreel or portfolio.



[southwark.ac.uk/mediatvfilm](https://southwark.ac.uk/mediatvfilm)

## Media Courses

On our practical Media courses you will develop a number of key skills and techniques within digital and creative media, games design, TV and film production.

### **Diploma in Art, Design and Media**

Available at Level › 1

### **Diploma in Creative Media Production and Technology: Games Design & Animation Pathway**

Available at Level › 2

### **Diploma in Creative Media Production and Technology: Filmmaking and TV**

Available at Level › 2

### **NextGen Diploma in Games Animation and VFX Skills**

Available at Level › 3

### **Creative Digital Media Production: Games Design and 3D Animation Pathway**

Available at Level › 3

### **Creative Digital Media Production: Filmmaking, Graphics & Animation Pathway**

Available at Level › 3

### **UAL Diploma in Creative Media: Graphic Design & Animation Pathway**

Available at Level › 3

### **UAL Diploma in Creative Media: TV & Film Production & Graphic Design Pathway**

Available at Level › 3

### **Digital Production Design and Development**

T Level Programme



# MUSIC

---

**Working in the music business is exhilarating, highly creative and great fun but you often need expertise and industry experience to succeed.**

Our music courses enable you to develop your practical skills and professional knowledge, giving you the opportunity to progress to higher level study.



[southwark.ac.uk/music](https://southwark.ac.uk/music)



## Music Courses

Our dynamic Music courses are designed to improve your knowledge to progress to further study or into a working environment. You will develop skills in producing, editing, mixing, studio recording and DJ. You will also learn to use Logic X software and carry out written research projects and group work to help you develop a wider skillset.

### **Extended Diploma in Music Performance and Production**

Available at Level › 3

### **Diploma in Music Performance and Production**

Available at Levels › 2 and 3



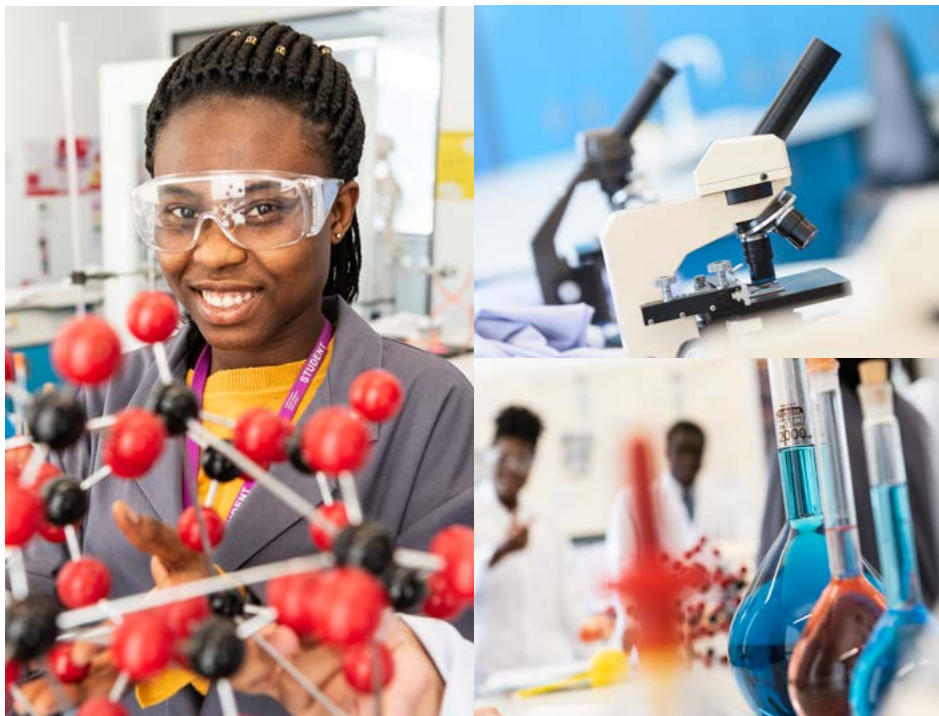


# SCIENCE

---

**Scientists are vital in today's world and will be instrumental for the growth of sectors such as healthcare, mobile communications and energy.**

On our science courses you will learn the fundamentals of your chosen specialism and put theory into practice in our high-tech labs, preparing you for a fascinating future in a range of industries.



## Christina Smith

**Christina Smith achieved AAA\* in Biology, Chemistry and Maths at Southwark College and has been accepted to Kings College London to study Medicine.**

“

Christina said: I'm really pleased with my results and can't wait to go to King's College. Throughout this year my teachers have gone above and beyond to help me, and I couldn't have achieved this result without their support.”

## SCIENCE COURSES





[southwark.ac.uk/science](https://southwark.ac.uk/science)

## Science Courses

Now more than ever, the importance of scientists is paramount to our world. Our comprehensive Science courses cover a variety of topics, including Biology, Chemistry and Physics. You will learn how to apply scientific principles and analyse forensic evidence, as well as developing key laboratory techniques and so much more.

You will build a diverse skills and knowledge bank, which can set you up for further study or an exciting career in a range of sectors.

### **GCSE Combined Science Programme**

Available at Level › 2

### **GCSE Programme: Biology, Chemistry and Physics**

Available at Level › 2

### **GCSE Programme: Biology (Adults)**

Available at Level › 2

### **GCSE Programme: Chemistry (Adults)**

Available at Level › 2

### **GCSE Programme: Maths**

Available at Level › 2

### **Access to HE: Science**

Available at Level › 3

### **Access to HE: Radiography**

Available at Level › 3

### **Access to HE: Engineering, Science and Maths**

Available at Level › 3



# SUPPORTED LEARNING



**We want every learner to achieve their potential and we offer a range of supported learning courses for people with high needs.**

Every learner will become part of a small, friendly group who learn at their own pace. As well as our own programmes we also offer support to those who are studying on other courses, including in-class and support for people with autism,

Asperger Syndrome, dyslexia, physical disabilities, visual and hearing impairments, and mental, personal care or health needs.

We will help you decide which course is best for you when you visit the College at an information event, which we hold during the day so you can meet our students and visit classes.





[southwark.ac.uk/supported-learning](https://southwark.ac.uk/supported-learning)



## Supported Learning Courses

- » **Supported Internships Pathway to Work**
- » **Community And Enterprise Engagement Programme**
- » **Skills for Progression Programme**
- » **Towards Independence Programme**





# TEACHING AND EDUCATION

---

**If you are passionate about inspiring the next generation, a career in teaching could be for you.**

Studying one of our well-respected teaching qualifications will enable you to gain a variety of skills, from assessment techniques to inclusive teaching approaches, opening the door to a job in one of the most rewarding of professions.



[southwark.ac.uk/teaching](https://southwark.ac.uk/teaching)

## Teaching and Education Courses

Our inspiring Teaching and Education courses will give you a range of skills that can help you launch a successful and rewarding career in the UK or abroad.

You will learn everything from planning classes and key teaching methods, to motivating learners, meeting their needs, record-keeping and more

### **Award in Support Work in Schools and Colleges**

Available at Level › 2

### **Certificate in Supporting Teaching and Learning**

Available at Levels › 2 and 3

### **Diploma in Supporting Teaching and Learning**

Available at Level › 3

### **Pre-Access Certificate**

Available at Level › 2

### **Access to HE: Education and Psychology**

Available at Level › 3

### **Award in Education and Training**

Available at Level › 3

### **Diploma in Education and Training**

Available at Level › 5



# TRAVEL AND TOURISM

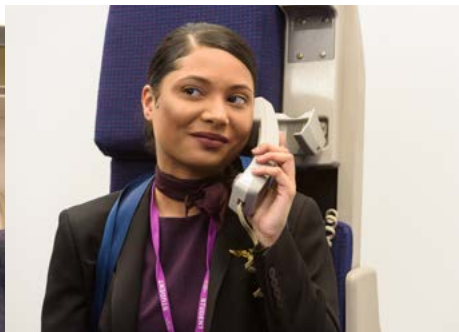


**Working in travel and tourism means working in a sector that is vibrant, exciting and constantly changing, giving you the opportunity to meet new people, experience different cultures and broaden your horizons like no other job.**

Learning in our real-work environments, including our aircraft cabin and travel agency, means that our courses will give you the specialist skills you need to start your journey.



[southwark.ac.uk/travel](https://southwark.ac.uk/travel)



## Travel and Tourism Courses

You will learn about aviation technology, customer service, passenger safety, locational geography, using galley equipment, emergency procedures and more. Completing these courses will also equip you with a broad skillset which can lead to further learning, or a first step in this fast-paced industry.

### **Certificate in Introduction to Cabin Crew**

Available at Level › 2

### **Diploma in Cabin Crew**

Available at Level › 2

### **Aviation, Travel and Tourism**

Available at Levels › 1 and 2

### **Travel and Tourism**

Available at Level › 3

### **Subsidiary Diploma in Aviation Operations**

Available at Level › 3





## CONTACT US

Our team of Advisors are available to help you find out more about all of our courses and provide information, advice and guidance on how you can take the next step towards your future career.

If you would like to get in touch with Southwark College, you can use our live chat on our website or call/email us using the details below.

**Southwark College**  
**25 The Cut, London, SE1 8LF**

**020 3757 4000 | [info@southwark.ac.uk](mailto:info@southwark.ac.uk)**



Apply today at **[southwark.ac.uk](https://southwark.ac.uk)**



Southwark College aims to provide the most up-to-date information in its prospectuses and on its website. However, it may be necessary to move or withdraw courses due to unforeseen circumstances. Where a course is cancelled or amended in any way to that advertised, the College will try to transfer students to an alternative course, should one exist that is appropriate and available but the College cannot guarantee the provision of all courses advertised in this guide or on the website. You are, therefore, advised when making an application to or enrolment with Southwark College to satisfy yourself as to any amendments or alterations that may affect your particular course and the course fees in place when you enrol, which will supersede any previously advertised.

All courses are subject to validation, availability, eligibility and additional support requirements. You will not be guaranteed a place on a course until you have fully enrolled and received your Learning Agreement. Please visit **[southwark.ac.uk](https://southwark.ac.uk)** for further information.

# Follow us on **social**



/SouthwarkCollege



@SouthwarkColl



/southwarkcollegeldn



/company/southwark-college-se1



@southwarkcollege



# SOUTHWARK COLLEGE



## CONTACT US



### Southwark College

25 The Cut, London, SE1 8LF

[southwark.ac.uk](http://southwark.ac.uk) | 020 3757 4000 | [info@southwark.ac.uk](mailto:info@southwark.ac.uk)

### Follow us on social

 /SouthwarkCollege

 /southwarkcollegeldn

 /@southwarkcollege

 /@SouthwarkColl

 /company/southwark-college-se1