

**SOUTHWARK  
COLLEGE**



**UNLOCK THE POTENTIAL  
OF YOUR WORKFORCE  
WITH T-LEVEL PLACEMENTS**



# SHAPING THE FUTURE WORKFORCE WITH THE SKILLS EMPLOYERS NEED

## ARE YOU AN EMPLOYER SEEKING TO ENRICH YOUR WORKFORCE?

Offering T-level placements can significantly benefit your organisation, giving you a competitive edge by providing a pipeline of emerging talent equipped with practical skills and a keen understanding of the industry.

T-level students on an industry placement offer a fresh perspective, introduce new skills, and provide mentorship and leadership development opportunities within your team. By offering T-level placements, you'll not only contribute to shaping the future workforce but also have a direct hand in enhancing your organisation

with motivated and well-prepared individuals, fostering a culture of learning and growth.

### EXPLORE T-LEVEL PLACEMENTS AND THEIR BENEFITS:

- » Fresh perspectives and innovative ideas
- » Introduction of new skills and perspectives
- » Opportunities for mentorship and leadership development
- » Contribution to shaping the future workforce

# WHAT ARE T-LEVELS?

T-Levels are two-year Level 3 vocational courses designed for students who have completed their GCSEs and are eager to acquire the practical skills necessary for immediate entry into the workforce, an apprenticeship, or higher education.

By offering T-Level placements, businesses can directly contribute to shaping the next generation of skilled professionals. More than 250 businesses have collaborated in the design of T-Levels, ensuring that students acquire the precise skills and knowledge that employers are actively seeking.



# T-LEVEL PLACEMENTS CAN BENEFIT YOUR ORGANISATION

Through T-Level placements, businesses can integrate student learning with hands-on industry experience. By dedicating 20% of their time to industry placements, students gain real work experience, making them valuable assets to businesses in their chosen industry.

T-Levels offer students UCAS points, with a T-Level Distinction equivalent to three A levels at A\*. This provides businesses with the chance to attract and recruit high-calibre talent with the relevant qualifications and practical experience needed to excel in the workplace.

By providing T-Level placements, businesses can support students in advancing their careers and gain access to a pool of skilled individuals with nationally recognised qualifications ready to contribute to your organisation's success.



# SUPPORT AT EVERY STEP

AS ONE OF LONDON'S TOP COLLEGES, WE WORK CLOSELY WITH EMPLOYERS IN THE LOCAL AREA TO MATCH THEM WITH THE TALENT OF TOMORROW.

We organise placements for students across our diverse range of subject areas, including specialist T-Levels subjects, including:

- » Healthcare
- » Digital
- » Management and Administration

If you are interested in taking on a work placement student, please get in touch with us at [\[email tbc\]](mailto:email_tbc) or visit [southwark.ac.uk/employers](https://southwark.ac.uk/employers).

Our dedicated team is here to support you every step of the way. We'll be in touch to update you on everything you can look forward to when participating in our work placement programme.

## SCAN ME

Offer a T-Level placement.

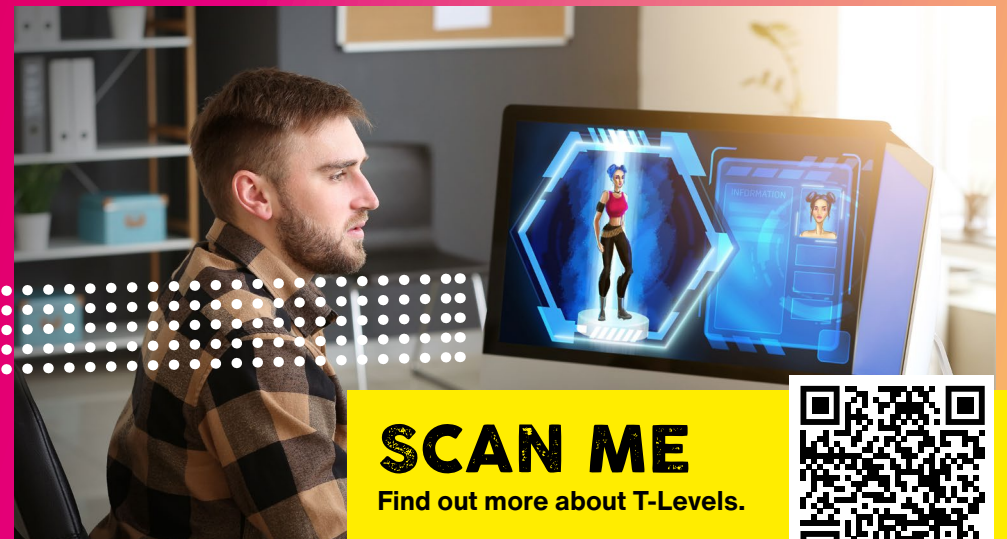


# 3 COURSES TO CHOOSE FROM

- » Supporting Healthcare: Supporting the Care of Children and Young People
- » Digital Production Design and Development
- » Management and Administration

Industry placements offer a unique chance to connect with the future workforce and access a pool of potential talent. Students who complete work placements are often asked to continue or even offered permanent positions, providing you with direct access to skilled and knowledgeable individuals.

To learn more about how T-Level placements can benefit your organisation and to explore our T-Levels offer, visit [southwark.ac.uk/t-levels](https://southwark.ac.uk/t-levels).



## SCAN ME

Find out more about T-Levels.



**Southwark College**

**25 The Cut, London, SE1 8LF**

**020 3757 4000 | [info@southwark.ac.uk](mailto:info@southwark.ac.uk)**

** /SouthwarkCollege**

** /@SouthwarkColl**

** /southwarkcollegeldn**

** /company/southwark-college-se1**

** /@southwarkcollege**